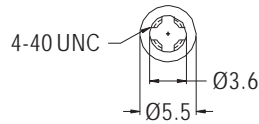
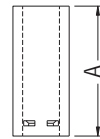


# SPACER SUPPORT

- ◆ MATERIAL: NYLON 66 (UL)
- ◆ FLAME CLASS: 94V-2/94V-0
- ◆ COLOR: NATURAL/BLACK
- ◆ UNIT: mm

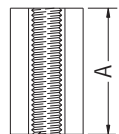
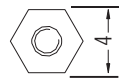
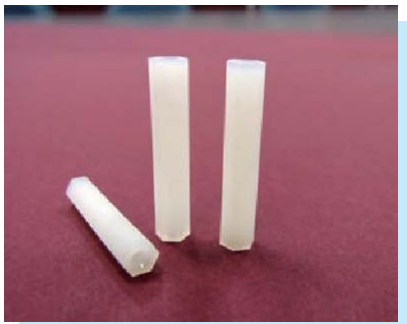


PARTNO	A	PACKAGE
KWH440-2	2.0	2000
KWH440-3	3.0	
KWH440-4	4.0	
KWH440-5	5.0	
KWH440-6	6.0	
KWH440-6.3	6.3	
KWH440-7	7.0	
KWH440-8	8.0	
KWH440-9	9.0	
KWH440-9.5	9.5	
KWH440-10	10.0	
KWH440-11	11.0	
KWH440-12	12.0	
KWH440-12.7	12.7	
KWH440-13	13.0	
KWH440-14	14.0	
KWH440-15	15.0	

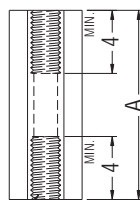
PARTNO	A	PACKAGE
KWH440-15.9	15.9	2000
KWH440-16	16.0	
KWH440-17	17.0	
KWH440-18	18.0	
KWH440-19	19.0	
KWH440-20	20.0	1000
KWH440-21	21.0	
KWH440-22	22.0	
KWH440-23	23.0	
KWH440-24	24.0	
KWH440-25	25.0	
KWH440-25.4	25.4	
KWH440-26	26.0	
KWH440-27	27.0	
KWH440-28	28.0	
KWH440-29	29.0	
KWH440-30	30.0	

# THREADED SPACER

- ◆ MATERIAL: NYLON 66 (UL)
- ◆ FLAME CLASS: 94V-2/94V-0
- ◆ COLOR: NATURAL/BLACK
- ◆ UNIT: mm



M2X0.4P



M2X0.4P

PARTNO	A	PACKAGE
HPS2-4	4.0	1000
HPS2-4.5	4.5	
HPS2-5	5.0	
HPS2-6	6.0	
HPS2-7	7.0	
HPS2-8	8.0	
HPS2-9	9.0	
HPS2-10	10.0	
HPS2-11	11.0	
HPS2-12	12.0	
HPS2-12.7	12.7	

PARTNO	A	PACKAGE
HPS2-13	13.0	1000
HPS2-14	14.0	
HPS2-15	15.0	
HPS2-16	16.0	
HPS2-17	17.0	
HPS2-18	18.0	
HPS2-19	19.0	
HPS2-20	20.0	
HPS2-21	21.0	
HPS2-22	22.0	
HPS2-23	23.0	
HPS2-24	24.0	
HPS2-25	25.0	

