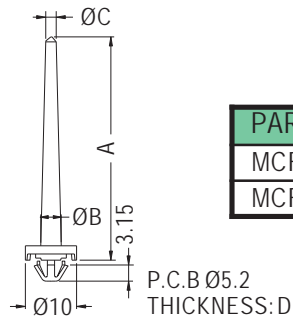


SPACERSUPPORT



- ◆ MATERIAL:PC (UL)
- ◆ FLAME CLASS:94V-2/94V-0
- ◆ COLOR:WHITE
- ◆ UNIT:mm

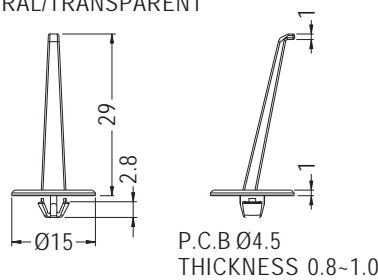


PART NO	A	B	C	D	PACKAGE
MCF-428	42.6	4.0	1.05	0.6-0.8	500
MCF-2908	29.0	4.0	1.05	0.6-0.8	

SPACERSUPPORT

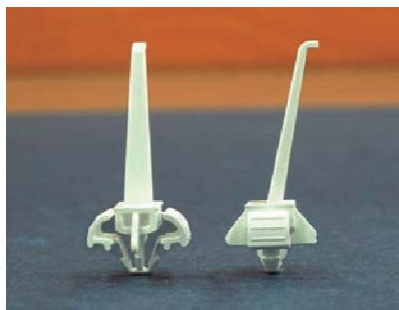


- ◆ MATERIAL:PC (UL)
- ◆ FLAME CLASS:94V-2
- ◆ COLOR:NATURAL/TRANSPARENT
- ◆ UNIT:mm

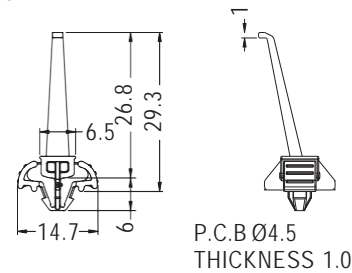


PART NO	PACKAGE
MCF-1	1000

SPACERSUPPORT



- ◆ MATERIAL:PC (UL)
- ◆ FLAME CLASS:94V-0
- ◆ COLOR:NATURAL/WHITE TRANSPARENT
- ◆ UNIT:mm

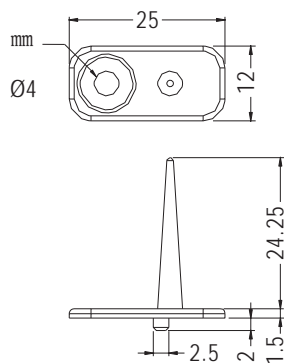


PART NO	PACKAGE
MCFF-5	1000

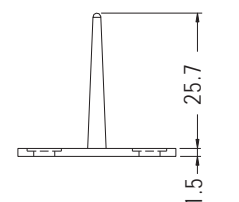
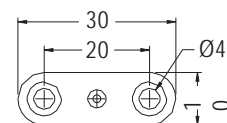
SPACERSUPPORT



- ◆ MATERIAL:PC (UL)
- ◆ FLAME CLASS:94V-0
- ◆ COLOR:WHITE
- ◆ UNIT:mm



PART NO	PACKAGE
MCFJ-1	1000



MOUNTING HOLE Ø5.0
THICKNESS 0.6-0.8

PART NO	PACKAGE
★ MCFJ-2	1000

