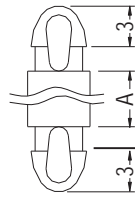


SPACER SUPPORT

- ◆ MATERIAL: NYLON 66 (UL)
- ◆ FLAME CLASS: 94V-2/94V-0
- ◆ COLOR: NATURAL/BLACK
- ◆ UNIT: mm



P.C.B Ø3.5
THICKNESS 1.6



P.C.B Ø3.5
THICKNESS 1.6

PARTNO	A	PACKAGE
MAF-2	2.0	1000
MAF-3	3.0	
MAF-4	4.0	
MAF-5	5.0	
MAF-6	6.0	
MAF-7	7.0	
MAF-8	8.0	

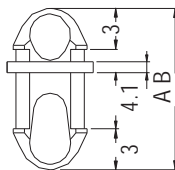
PARTNO	A	PACKAGE
MAF-10	10.0	1000
MAF-12	12.0	
MAF-14	14.0	
MAF-16	16.0	
MAF-18	18.0	
MAF-20	20.0	
MAF-22	22.0	

SPACER SUPPORT

- ◆ MATERIAL: NYLON 66 (UL)
- ◆ FLAME CLASS: 94V-2/94V-0
- ◆ COLOR: NATURAL/WHITE/BLACK
- ◆ UNIT: mm



P.C.B Ø5.0
THICKNESS 0.8

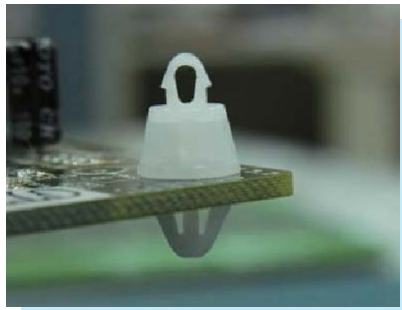


P.C.B Ø5.0
THICKNESS 4.0

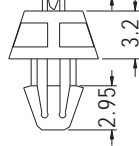
PARTNO	A	B	PACKAGE
MAFB5-0.8	0.8	11.8	1000
MAFB5-9.7	9.7	20.7	

SPACER SUPPORT

- ◆ MATERIAL: NYLON 66 (UL)
- ◆ FLAME CLASS: 94V-2/94V-0
- ◆ COLOR: NATURAL/BLACK
- ◆ UNIT: mm



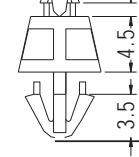
P.C.B Ø1.5
THICKNESS 0.8



CHASSIS Ø3.0
THICKNESS 1.6

PARTNO	PACKAGE
MAEB-3.2	1000

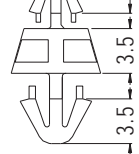
P.C.B Ø2.5
THICKNESS 1.0



CHASSIS Ø4.0
THICKNESS 1.6

PARTNO	PACKAGE
MAEE-4.5	1000

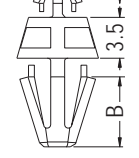
P.C.B Ø3.0
THICKNESS 1.0



CHASSIS Ø4.0
THICKNESS 1.6

PARTNO	PACKAGE
MAEA-3.5M	1000

P.C.B Ø3.0
THICKNESS 1.0



CHASSIS Ø4.8
THICKNESS: E

PARTNO	B	E	PACKAGE
MAEA-3.5	6.0	1.2	1000
MAEA-3.5L	6.0	1.6	
MAEA-3.5LS	4.1	1.6	

