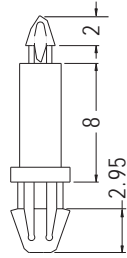


SPACERSUPPORT



- ◆ MATERIAL: NYLON 66 (UL)
- ◆ FLAME CLASS: 94V-2/94V-0
- ◆ COLOR: NATURAL/BLACK
- ◆ UNIT: mm



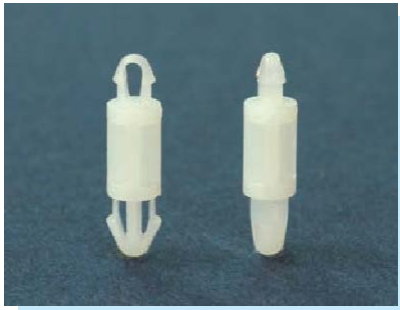
P.C.B Ø1.5
THICKNESS 1.0

CHASSIS Ø3.0
THICKNESS 1.6

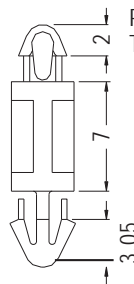
PART NO	PACKAGE
LCMB-8	1000



SPACERSUPPORT



- ◆ MATERIAL: NYLON 66 (UL)
- ◆ FLAME CLASS: 94V-2/94V-0
- ◆ COLOR: NATURAL/BLACK
- ◆ UNIT: mm



P.C.B Ø2.5
THICKNESS 1.6

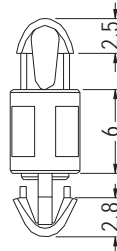
P.C.B Ø3.0
THICKNESS 1.6

PART NO	PACKAGE
LCMC-7	1000

SPACER SUPPORT



- ◆ MATERIAL: NYLON 66 (UL)
- ◆ FLAME CLASS: 94V-2/94V-0
- ◆ COLOR: NATURAL/BLACK
- ◆ UNIT: mm



P.C.B Ø3.5
THICKNESS 2.4

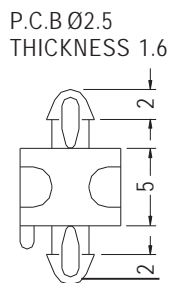
P.C.B Ø3.5
THICKNESS 1.6

PART NO	PACKAGE
MAMDD-6	1000

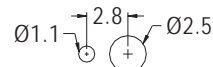
SPACER SUPPORT



- ◆ MATERIAL: NYLON 66 (UL)
- ◆ FLAME CLASS: 94V-2/94V-0
- ◆ COLOR: NATURAL/BLACK
- ◆ UNIT: mm



P.C.B Ø2.5
THICKNESS 1.6



MOUNTING HOLES

PART NO	PACKAGE
MADMK-5	2000

