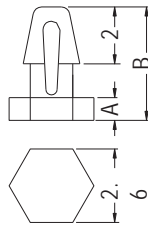


SUPPORT



- ◆ MATERIAL: NYLON 66 (UL)
- ◆ FLAME CLASS: 94V-2/94V-0
- ◆ COLOR: NATURAL/BLACK
- ◆ UNIT: mm

P.C.B Ø1.5
THICKNESS 1.0



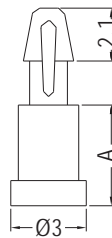
PART NO	A	B	PACKAGE
MASD-0.8	0.8	4.0	2000
MASD-2	2.0	5.2	

SUPPORT



- ◆ MATERIAL: NYLON 66 (UL)
- ◆ FLAME CLASS: 94V-2/94V-0
- ◆ COLOR: NATURAL/BLACK
- ◆ UNIT: mm

P.C.B Ø1.5
THICKNESS 1.6



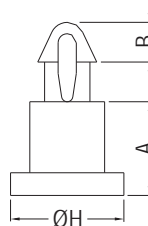
PART NO	A	PACKAGE
MASS-2	2.0	2000
MASS-2.5	2.5	
MASS-3	3.0	
MASS-3.5	3.5	
MASS-4	4.0	
MASS-5	5.0	
MASS-6	6.0	
MASS-6.5	6.5	

SUPPORT

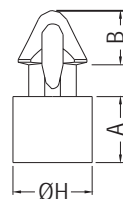


- ◆ MATERIAL: NYLON 66 (UL)
- ◆ FLAME CLASS: 94V-2/94V-0
- ◆ COLOR: NATURAL/BLACK
- ◆ UNIT: mm

P.C.B Ø2.0
THICKNESS: E



P.C.B Ø2.0
THICKNESS: E



FOR MA-2.5S, MA-3S-1

PART NO	A	B	E	H	PACKAGE
MA-1.8	1.8	1.9	1.6	4.2	2000
MA-2	2.0	1.9	1.6	4.2	
MA-2L	2.0	2.05	2.0	4.8	
MA-2.5	2.5	1.9	1.6	4.1	
MA-2.5L	2.5	2.0	1.6	4.8	
MA-2.5S	2.5	2.05	1.0	3.0	
MA-3	3.0	1.9	1.6	4.8	
MA-3S	3.0	1.8	1.6	4.2	
MA-3S-1	3.0	2.05	1.0	3.0	
MA-3.2	3.2	1.9	1.6	4.8	
MA-3.5	3.5	1.9	1.6	4.2	
MA-4	4.0	1.9	1.6	4.8	
MA-4.5	4.5	1.9	1.6	4.2	
MA-4.7	4.7	1.9	1.6	4.8	
MA-5	5.0	1.9	1.6	4.8	
MA-5.6	5.6	2.0	1.6	4.2	
MA-6	6.0	1.9	1.6	5.0	
MA-6.5	6.5	1.9	1.6	5.0	
MA-6.75	6.75	1.9	1.6	5.0	
MA-8	8.0	1.9	1.6	5.0	
MA-9	9.0	1.9	1.6	5.0	

