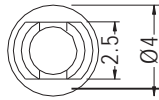


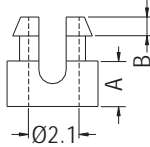
SPACER SUPPORT



- ◆ MATERIAL: NYLON 66 (UL)
- ◆ FLAME CLASS: 94V-2/94V-0
- ◆ COLOR: NATURAL/BLACK
- ◆ UNIT: mm



P.C.B Ø3.0
THICKNESS: E



FOR M2 SCREW

PART NO	A	B	E	PACKAGE
SS1-2	2.0	1.2	0.8~1.0	2000
SS1-2.5	2.5			
SS1-3	3.0			
SS1-3.5	3.5			
SS1-4	4.0			
SS1-4.5	4.5			
SS1-5	5.0			
SS1-5.5	5.5			
SS1-6	6.0			

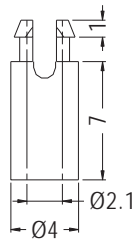
PART NO	A	B	E	PACKAGE
SS1-2S	2.0	0.5	0.8~1.0	2000
SS1-2.5S	2.5			
SS1-3S	3.0			
SS1-3.5S	3.5			
SS1-4S	4.0			
SS1-4.5S	4.5			
SS1-5S	5.0			
SS1-5.5S	5.5			
SS1-6S	6.0			
SS1-2L	2.0			
SS1-2.5L	2.5			
SS1-3L	3.0			
SS1-3.5L	3.5			
SS1-4L	4.0			
SS1-4.5L	4.5			
SS1-5L	5.0			
SS1-5.5L	5.5			
SS1-6L	6.0			
SS1-8L	8.0			

SPACER SUPPORT



- ◆ MATERIAL: NYLON 66 (UL)
- ◆ FLAME CLASS: 94V-2/94V-0
- ◆ COLOR: NATURAL/BLACK
- ◆ UNIT: mm

P.C.B Ø3.0
THICKNESS 1.3



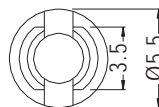
FOR M2 SCREW

PART NO	PACKAGE
SS3-7(1.3)	1000

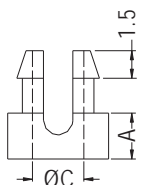
SPACER SUPPORT



- ◆ MATERIAL: NYLON 66 (UL)
- ◆ FLAME CLASS: 94V-2/94V-0
- ◆ COLOR: NATURAL/BLACK
- ◆ UNIT: mm



P.C.B Ø4.0
THICKNESS: E



FOR SCREW: S

PART NO	A	C	E	S	PACKAGE
SS2-2.5S	2.5	2.7	1.6	M2.6	2000
SS2-3S	3.0				
SS2-4S	4.0				
SS2-5S	5.0				
SS2-6S	6.0				
SS2-2.5U	2.5	2.8	1.6~1.8	M2	
SS2-2.5	2.5				
SS2-3	3.0				
SS2-4	4.0				
SS2-5	5.0				
SS2-5.4	5.4				
SS2-6	6.0				
SS2-8	8.0				
SS2-9.5	9.5				

