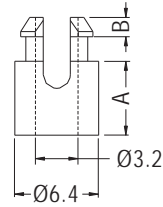


# SPACER SUPPORT

- ◆ MATERIAL:NYLON 66 (UL)
- ◆ FLAME CLASS:94V-2/94V-0
- ◆ COLOR:NATURAL/BLACK
- ◆ UNIT:mm



P.C.B Ø4.8  
THICKNESS 1.2-1.7



FOR M3 SCREW

PART NO	A	B	PACKAGE
SS-3	3.2	1.5	1000
SS-3.5	3.5	1.5	
SS-4	4.0	1.5	
SS-4.5	4.5	1.5	
SS-5	4.8	1.5	
SS-6	6.4	1.5	
SS-7	7.0	1.7	
SS-7.4	7.4	1.7	
SS-8	7.9	1.5	

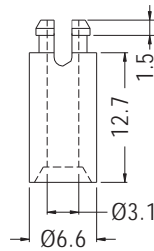
PART NO	A	B	PACKAGE	
SS-10	9.5	1.5	1000	
SS-10A	9.5	1.7		
SS-11	11.1	1.5		
SS-12A	12.0	1.5		
SS-12	12.7	1.5		
SS-14	14.2	1.5		
SS-15	15.0	1.5		
SS-16	15.9	1.5		
SS-19	19.1	1.5		
SS-22	22.2	1.5		500
SS-25	25.4	1.5		

# SPACERSUPPORT

- ◆ MATERIAL:NYLON 66 (UL)
- ◆ FLAME CLASS:94V-2/94V-0
- ◆ COLOR:NATURAL/BLACK
- ◆ UNIT:mm



P.C.B Ø4.8  
THICKNESS 1.6



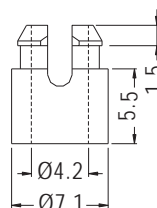
PART NO	PACKAGE
SSA-12.7	1000

# SPACERSUPPORT

- ◆ MATERIAL:NYLON 66 (UL)
- ◆ FLAME CLASS:94V-2/94V-0
- ◆ COLOR:NATURAL/BLACK
- ◆ UNIT:mm



P.C.B Ø5.8  
THICKNESS 1.6



PART NO	PACKAGE
SSA4-5.5	1000