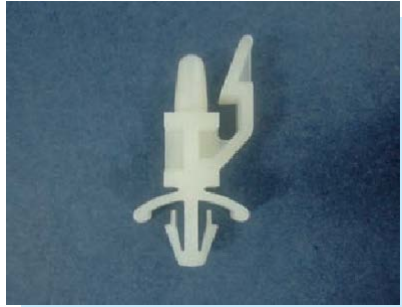
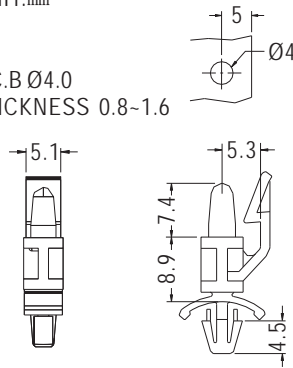


SPACER SUPPORT

- ◆ MATERIAL: NYLON 66 (UL)
- ◆ FLAME CLASS: 94V-2/94V-0
- ◆ COLOR: NATURAL/BLACK
- ◆ UNIT: mm



P.C.B Ø4.0
THICKNESS 0.8-1.6

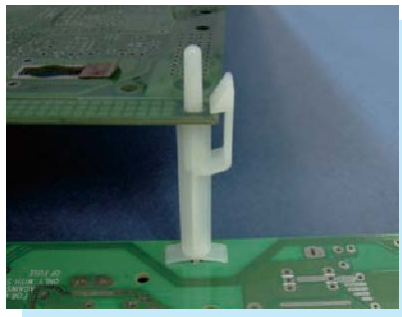


CHASSIS Ø4.0
THICKNESS 0.8-2.0

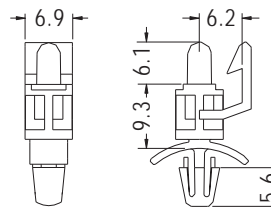
| PART NO | PACKAGE |
|---------|---------|
| ULCE-9 | 1000 |

SPACER SUPPORT

- ◆ MATERIAL: NYLON 66 (UL)
- ◆ FLAME CLASS: 94V-2/94V-0
- ◆ COLOR: NATURAL/BLACK
- ◆ UNIT: mm



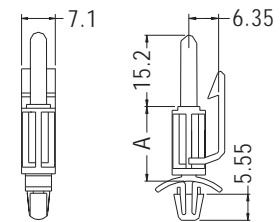
P.C.B Ø4.0
THICKNESS 1.6



CHASSIS Ø4.8
THICKNESS 1.6-2.2

| PART NO | PACKAGE |
|---------|---------|
| ULCB-9S | 1000 |

P.C.B Ø4.0
THICKNESS 1.6

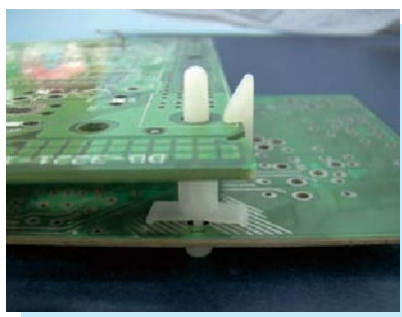


CHASSIS Ø4.8
THICKNESS 1.6

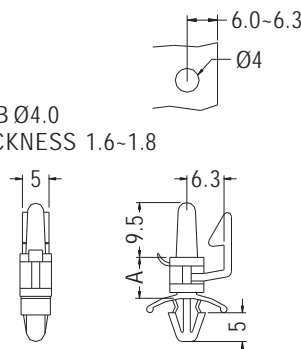
| PART NO | A | PACKAGE |
|---------|------|---------|
| ULCB-15 | 15.9 | 1000 |
| ULCB-38 | 38.1 | |

SPACER SUPPORT

- ◆ MATERIAL: NYLON 66 (UL)
- ◆ FLAME CLASS: 94V-2/94V-0
- ◆ COLOR: NATURAL/BLACK
- ◆ UNIT: mm



P.C.B Ø4.0
THICKNESS 1.6-1.8



CHASSIS Ø4.8
THICKNESS 0.5-2.0

| PART NO | A | PACKAGE |
|-----------|------|---------|
| ULCB-6 | 6.3 | 1000 |
| ULCB-8 | 8.0 | |
| ULCB-9 | 9.5 | |
| ULCB-10 | 10.0 | |
| ULCB-12 | 12.7 | |
| ULCB-16 | 15.9 | |
| ULCB-19.1 | 19.1 | |
| ULCB-23 | 23.0 | |