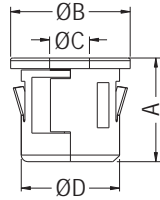


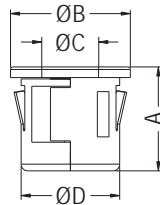
# LED HOLDER

- ◆ MATERIAL: NYLON 66 (UL)
- ◆ FLAME CLASS: 94V-2/94V-0
- ◆ COLOR: BLACK
- ◆ UNIT: mm



CHASSIS: ØE  
THICKNESS: F

PART NO	A	B	C	D	E	F	SUITABLE LED	PACKAGE
LED3-14	7.8	9.0	3.0	7.4	7.5	0.6~1.0	3 PIN	1000
LED3-14M						1.0~1.2		
LED3-15	6.8	7.2	3.0	6.3	6.4	0.6~1.0	2 PIN	
LED3-15M						1.0~1.2		

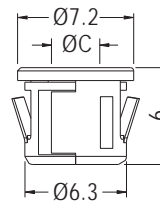


CHASSIS: ØE  
THICKNESS: F

PART NO	A	B	C	D	E	F	SUITABLE LED	PACKAGE
LED5-17	10.9	10.5	5.0	8.8	9.0	0.6~1.0	3 PIN	1000
LED5-17M						1.0~1.2		
LED5-18	9.5	9.0	5.0	7.4	7.5	0.6~1.0	2 PIN	
LED5-18M						1.0~1.2		
LED5-18L						1.5		

# LED HOLDER

- ◆ MATERIAL: NYLON 66 (UL)
- ◆ FLAME CLASS: 94V-2/94V-0
- ◆ COLOR: BLACK
- ◆ UNIT: mm

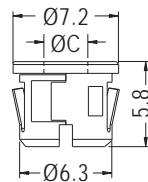


CHASSIS Ø6.35-Ø6.4  
THICKNESS 0.8

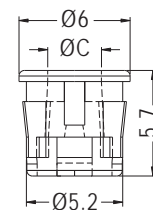
PART NO	C	PACKAGE
LED3-33	3.0	1000

# LED HOLDER

- ◆ MATERIAL: NYLON 66 (UL)
- ◆ FLAME CLASS: 94V-2/94V-0
- ◆ COLOR: BLACK
- ◆ UNIT: mm



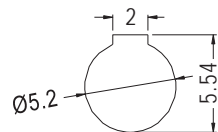
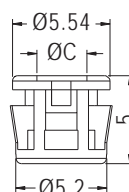
CHASSIS Ø6.35  
THICKNESS: F



CHASSIS Ø5.2  
THICKNESS: F

PART NO	C	F	PACKAGE
LED3-16	3.0	0.6~1.0	1000
LED3-16M	3.0	1.0~1.2	

PART NO	C	F	PACKAGE
LED3-18	2.9	0.8	1000
LED3-24	3.0	1.2	



MOUNTING HOLE  
THICKNESS 0.8

PART NO	C	PACKAGE
LED3-25	3.0	1000

