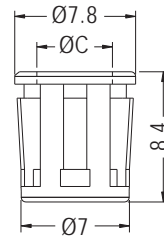


LED HOLDER



- ◆ MATERIAL: NYLON 66 (UL)
- ◆ FLAME CLASS: 94V-2/94V-0
- ◆ COLOR: BLACK
- ◆ UNIT: mm



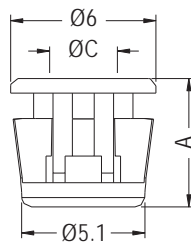
CHASSIS Ø7.0
 THICKNESS: F

PARTNO	C	F	PACKAGE
LED5-24	5.0	0.8~1.0	1000
LED5-24M	5.0	1.2	
LED5-24L	5.0	1.6	

LED HOLDER



- ◆ MATERIAL: NYLON 66 (UL)
- ◆ FLAME CLASS: 94V-2/94V-0
- ◆ COLOR: BLACK
- ◆ UNIT: mm



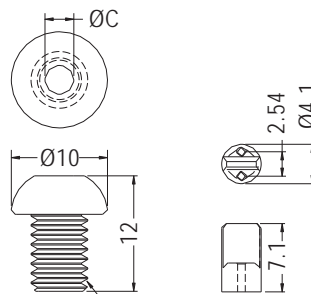
MOUNTING HOLE Ø5.2
 THICKNESS: F

PARTNO	A	C	F	PACKAGE
LED3-40	5.3	2.8	0.8~1.0	1000
LED3-41	5.3	2.8	1.2	
LED3-42	5.7	2.95	0.8~1.0	

LED HOLDER



- ◆ MATERIAL: PC (UL)
- ◆ FLAME CLASS: 94V-2
- ◆ COLOR: NATURAL/BLACK
- ◆ UNIT: mm



LELG-1A
 MOUNTING HOLE Ø6.4

LELG-1B

PARTNO	C	PACKAGE
LELG-1F	3.0	2000

