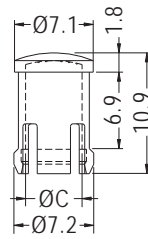


## LENS CAP



- ◆ MATERIAL:PC (UL)
- ◆ FLAME CLASS:94V-2
- ◆ COLOR:TRANSPARENT
- ◆ UNIT:mm



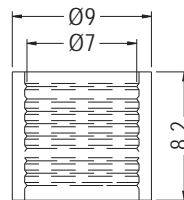
CHASSIS Ø6.4  
THICKNESS 0.8-6.35

PART NO	C	PACKAGE
LC5-1	5.1	1000

## LED HOLDER COVER



- ◆ MATERIAL:NYLON 66 (UL)
- ◆ FLAME CLASS:94V-2/94V-0
- ◆ COLOR:NATURAL/BLACK
- ◆ UNIT:mm

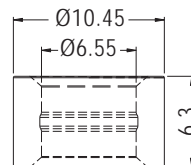


PART NO	PACKAGE
LC5-1T	1000

## LED HOLDER COVER



- ◆ MATERIAL:NYLON 66 (UL)
- ◆ FLAME CLASS:94V-2/94V-0
- ◆ COLOR:NATURAL/BLACK
- ◆ UNIT:mm

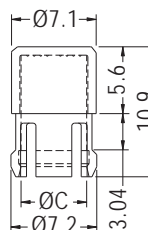


PART NO	PACKAGE
LC5-2T	1000

## LENS CAP



- ◆ MATERIAL:PC (UL)
- ◆ FLAME CLASS:94V-2
- ◆ COLOR:TRANSPARENT
- ◆ UNIT:mm



CHASSIS Ø6.35  
THICKNESS 3.0

PART NO	C	PACKAGE
LC5-2	5.2	1000