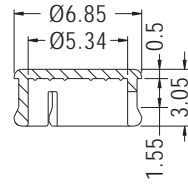


LENS CAP



- ◆ MATERIAL:PC (UL)
- ◆ FLAME CLASS:94V-2
- ◆ COLOR:TRANSPARENT
- ◆ UNIT:mm



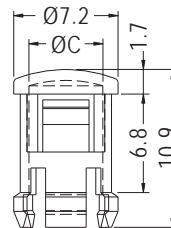
MOUNTING HOLE $\varnothing 6.35$

PART NO	PACKAGE
LC5-3	1000

LENS CAP



- ◆ MATERIAL:PC (UL)
- ◆ FLAME CLASS:94V-2
- ◆ COLOR:TRANSPARENT
- ◆ UNIT:mm



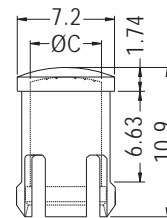
CHASSIS $\varnothing 6.4$
THICKNESS 0.8

PART NO	C	PACKAGE
LC5-4	5.0	1000

LENS CAP



- ◆ MATERIAL:PC (UL)
- ◆ FLAME CLASS:94V-2
- ◆ COLOR:TRANSPARENT
- ◆ UNIT:mm



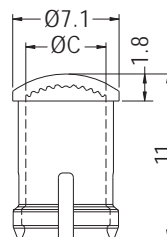
CHASSIS $\varnothing 6.4\text{-}\varnothing 6.45$
THICKNESS 0.8-6.35

PART NO	C	PACKAGE
LC5-5	5.0	2000

LIGHT PIPE



- ◆ MATERIAL:PC (UL)
- ◆ FLAME CLASS:94V-0
- ◆ COLOR:TRANSPARENT
- ◆ UNIT:mm



MOUNTING HOLE $\varnothing 6.4 \sim \varnothing 6.45$
THICKNESS $0.8 \sim 6.35$

PART NO	C	PACKAGE
LC5-6	5.0	1000

