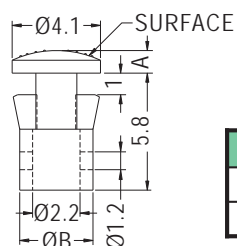


LIGHT PIPE



- ◆ MATERIAL:PC (UL)
- ◆ FLAME CLASS:94V-2
- ◆ COLOR:TRANSPARENT
- ◆ UNIT:mm



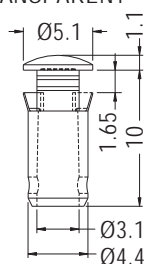
PART NO	A	B	SURFACE	PACKAGE
LEU-1	1.1	3.4	Bright	2000
LEU-2	1.05	3.35	Matte	

CHASSIS Ø3.5
THICKNESS 0.8~1.0

LIGHT PIPE



- ◆ MATERIAL:PC (UL)
- ◆ FLAME CLASS:94V-2
- ◆ COLOR:TRANSPARENT
- ◆ UNIT:mm



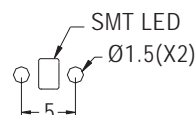
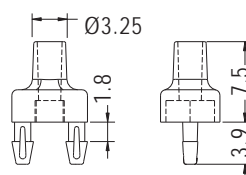
MOUNTING HOLE Ø4.5
THICKNESS 1.6

PART NO	PACKAGE
LEU-4	1000

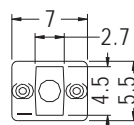
LENS CAP



- ◆ MATERIAL:NYLON 66 (UL)
- ◆ FLAME CLASS:94V-2/94V-0
- ◆ COLOR:BLACK
- ◆ UNIT:mm



MOUNTING HOLES

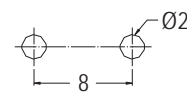
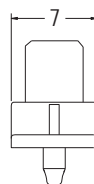
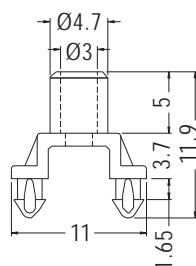


PART NO	PACKAGE
PMR-3	2000

LENS CAP



- ◆ MATERIAL:NYLON 66 (UL)
- ◆ FLAME CLASS:94V-2/94V-0
- ◆ COLOR:BLACK
- ◆ UNIT:mm



MOUNTING HOLES
THICKNESS 1.6

PART NO	PACKAGE
PMR-10	1000

