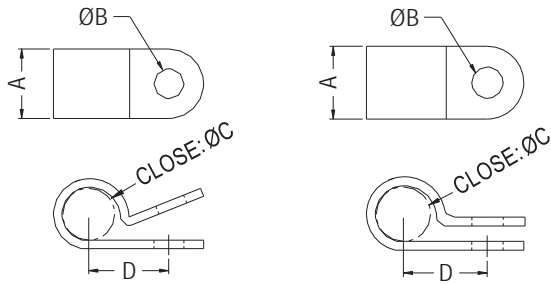
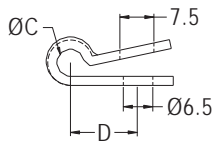
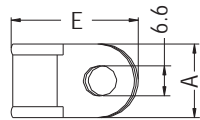


# CABLE CLAMP

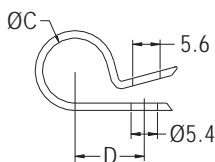
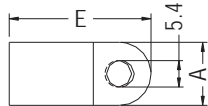
- ◆ MATERIAL: NYLON 66 (UL)
- ◆ FLAME CLASS: 94V-2/94V-0
- ◆ COLOR: NATURAL/BLACK
- ◆ UNIT: mm



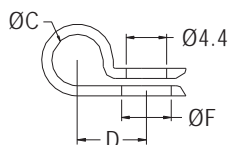
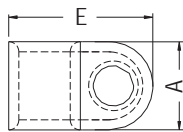
FOR CC-10, CC-35, CC-50



PART NO	A	C	D	E	PACKAGE
CC-21	16.2	6.0	14.9	28.0	500

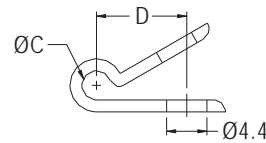
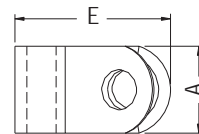


PART NO	A	C	D	E	PACKAGE
CC-23	12.9	13.3	14.15	29.0	500



PART NO	A	C	D	E	F	PACKAGE
CC-24	9.6	5.6	7.5	15.7	4.4	500
★ CC-45	9.6	5.6	7.5	15.7	4.5	

PART NO	A	B	C		D	PACKAGE
			mm	inch		
CC-1SS	6.5	3.8	3.2	1/8	6.8	1000
CC-1S	9.2	5.4	3.2	1/8	8.2	
CC-1	13.2	5.4	3.0	1/8	8.9	
CC-2	10.0	5.4	4.5	3/16	10.2	
CC-3	9.3	5.0	6.2	1/4	10.2	
CC-4	9.5	5.0	7.6	5/16	10.5	
CC-4L	9.2	5.4	8.0	5/16	10.7	
CC-5	9.5	4.8	9.0	3/8	12.4	
CC-5L	12.3	5.4	9.0	3/8	13.2	
CC-6	12.7	4.8	11.5	1/2	14.7	
CC-7	12.9	5.4	12.8	1/2	16.0	
CC-7S	12.5	4.8	15.5	5/8	17.1	
CC-8	12.9	5.4	17.0	3/4	20.2	200
CC-9	12.9	5.4	20.0	7/8	21.2	250
CC-10	12.9	5.4	24~27	1-1/8	23.5	200
CC-12	9.9	4.4	3.0	1/8	8.5	1000
CC-13	9.5	3.2	8.3	5/16	12.0	
CC-14	6.3	3.7	3.5	1/7	6.4	
CC-15	9.6	4.4	5.6	1/4	12.1	
CC-16	11.6	6.4	5.6	1/4	12.1	
CC-17	10.0	4.2	5.0	1/4	9.5	
CC-18	10.0	4.2	11.0	7/16	13.0	
CC-19	9.9	4.4	4.5	3/16	7.75	
CC-20	10.0	4.3	6.5	1/4	9.9	
CC-31	10.0	4.2	11.5	1/2	14.0	
CC-32	10.0	4.2	5.0	1/4	9.5	
CC-35	6.5	3.3	3.0	1/8	9.5	
CC-37	10.9	5.0	7.5	5/16	10.5	
CC-38	12.9	6.6	7.5	5/16	10.5	
★ CC-44	10.0	3.5	4.5	3/16	10.2	
★ CC-50	4.0	2.5	3.1	1/8	6.0	



PART NO	A	C	D	E	PACKAGE
CC-25	9.5	3.2	9.86	17.0	500
CC-26	9.5	4.8	11.1	19.0	

