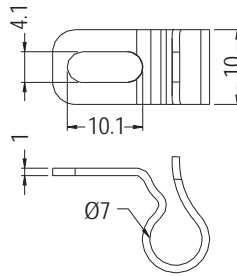


WIRE MOUNT

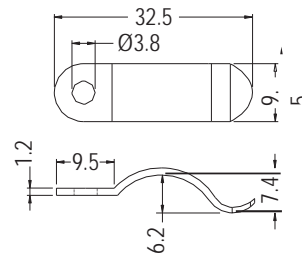
- ◆ MATERIAL: NYLON 66 (UL)
- ◆ FLAME CLASS: 94V-2/94V-0
- ◆ COLOR: NATURAL/BLACK
- ◆ UNIT: mm



PART NO	PACKAGE
CCMG-1	500

WIRE MOUNT

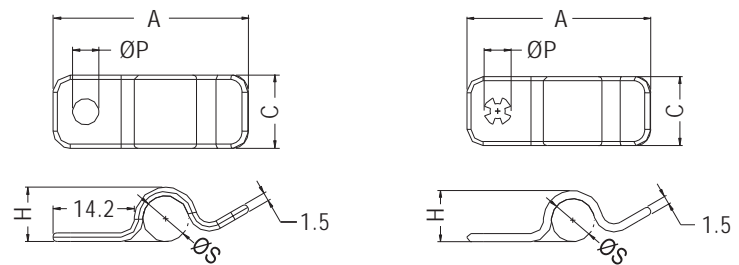
- ◆ MATERIAL: POM (UL)
- ◆ FLAME CLASS: 94HB
- ◆ COLOR: BLACK
- ◆ UNIT: mm



PART NO	PACKAGE
CDK-1	1000

WIRE MOUNT

- ◆ MATERIAL: NYLON 66 (UL)
- ◆ FLAME CLASS: 94V-2/94V-0
- ◆ COLOR: NATURAL/BLACK
- ◆ UNIT: mm



FOR CDK-3-1

PART NO	A	C	H	P	S	PACKAGE
CDK-3	34.15	12.8	9.5	4.6	8.0	1000
CDK-3-1	34.15	12.8	9.5	5.2	8.0	

