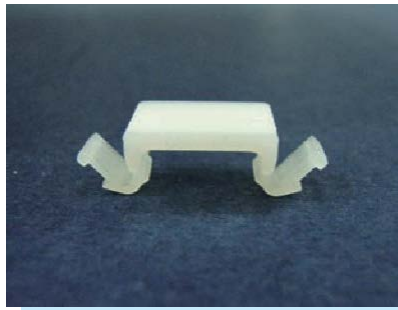
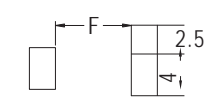
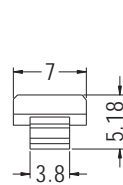
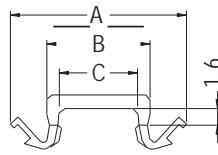


WIRE MOUNT



- ◆ MATERIAL: NYLON 66 (UL)
- ◆ FLAME CLASS: 94V-2/94V-0
- ◆ COLOR: NATURAL/BLACK
- ◆ UNIT: mm



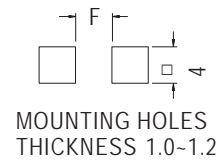
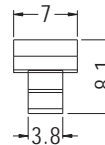
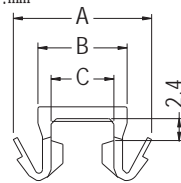
MOUNTING HOLES
THICKNESS 0.6-0.8

PART NO	A	B	C	F	PACKAGE
CCMH-7.5	16.88	9.9	7.5	7.3	1000

WIRE MOUNT



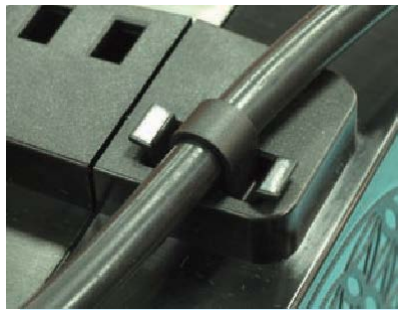
- ◆ MATERIAL: NYLON 66 (UL)
- ◆ FLAME CLASS: 94V-2/94V-0
- ◆ COLOR: NATURAL/BLACK
- ◆ UNIT: mm



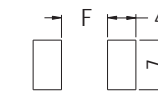
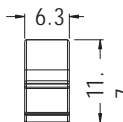
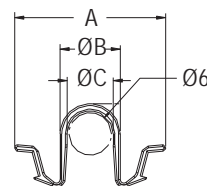
MOUNTING HOLES
THICKNESS 1.0-1.2

PART NO	A	B	C	F	PACKAGE
CCMH-12	15.2	9.8	6.8	4.0	1000
CCMH-15.1	18.1	12.9	10.0	7.1	

WIRE MOUNT



- ◆ MATERIAL: NYLON 66 (UL)
- ◆ FLAME CLASS: 94V-2/94V-0
- ◆ COLOR: NATURAL/BLACK
- ◆ UNIT: mm



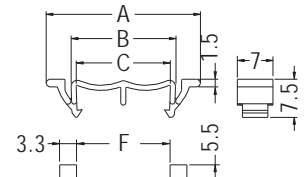
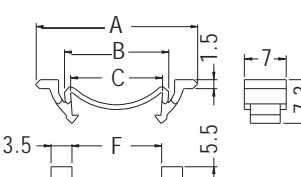
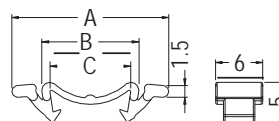
MOUNTING HOLES
THICKNESS 1.9

PART NO	A	B	C	F	PACKAGE
CCMHA-6	21.3	8.5	6.5	6.5	1000

WIRE MOUNT



- ◆ MATERIAL: NYLON 66 (UL)
- ◆ FLAME CLASS: 94V-2/94V-0
- ◆ COLOR: NATURAL/BLACK
- ◆ UNIT: mm



MOUNTING HOLES
FOR CCMB-15, CCMB-30

MOUNTING HOLES
FOR CCMB-31

MOUNTING HOLES
FOR CCMB-10

PART NO	A	B	C	F	PACKAGE
★ CCMB-10	20.0	12.36	10.36	10.0	1000
CCMB-15	27.0	17.4	15.35	15.0	
CCMB-30	42.0	32.18	30.18	30.0	
CCMB-31	30.3	20.5	18.2	18.4	

