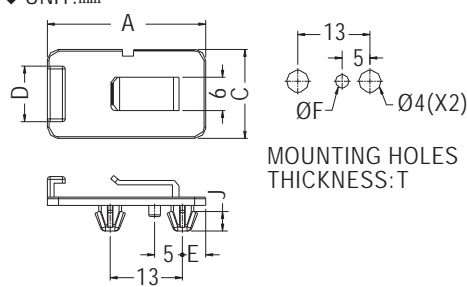


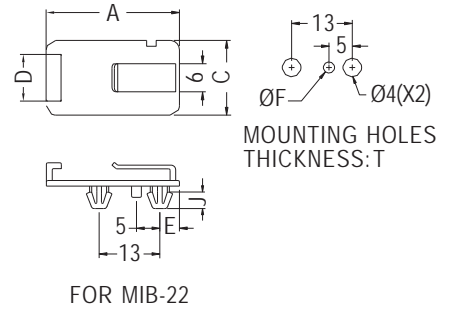
WIRE MOUNT



- ◆ MATERIAL: NYLON 66 (UL)
- ◆ FLAME CLASS: 94V-2/94V-0
- ◆ COLOR: NATURAL/BLACK
- ◆ UNIT: mm



MOUNTING HOLES THICKNESS: T



MOUNTING HOLES THICKNESS: T

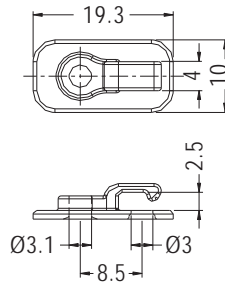
FOR MIB-22

PART NO	A	C	D	E	F	J	T	PACKAGE
MIB-2	27.0	16.0	10.0	4.2	2.3	3.5	0.6~0.8	
MIB-6	28.5	16.0	10.0	4.2	2.4	3.5	0.6~0.8	1000
★ MIB-22	28.5	16.0	10.0	4.2	2.4	3.5	0.8	

WIRE MOUNT

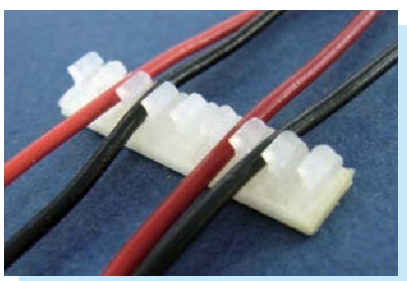


- ◆ MATERIAL: NYLON 66 (UL)
- ◆ FLAME CLASS: 94V-2/94V-0
- ◆ COLOR: NATURAL/BLACK
- ◆ UNIT: mm

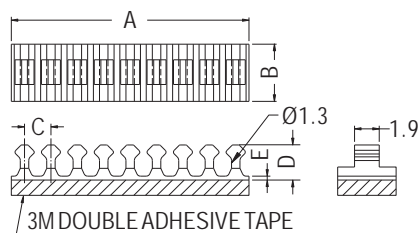


PART NO	PACKAGE
MIB-21	1000

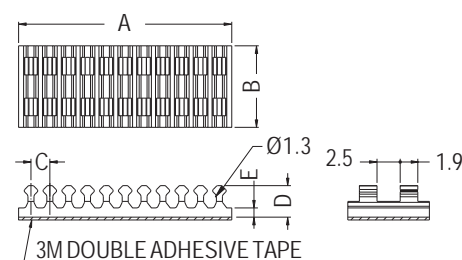
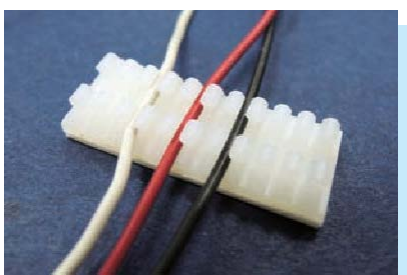
WIRE MOUNT



- ◆ MATERIAL: NYLON 66 (UL)
- ◆ FLAME CLASS: 94V-2/94V-0
- ◆ COLOR: NATURAL/BLACK
- ◆ UNIT: mm



PART NO	A	B	C	D	E	PACKAGE
MU-01-8	18.3	4.4	2.03	2.7	0.3	500



PART NO	A	B	C	D	E	PACKAGE
MU-02-10	23.0	8.8	2.03	3.4	1.0	200

