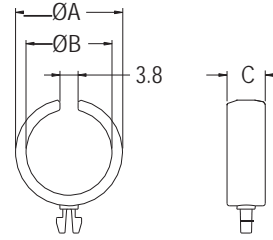


## WIRE HOLDER



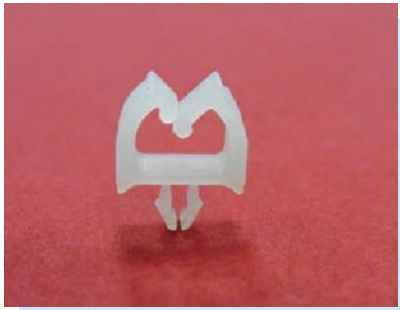
- ◆ MATERIAL: NYLON 66 (UL)
- ◆ FLAME CLASS: 94V-2/94V-0
- ◆ COLOR: NATURAL/WHITE/BLACK
- ◆ UNIT: mm



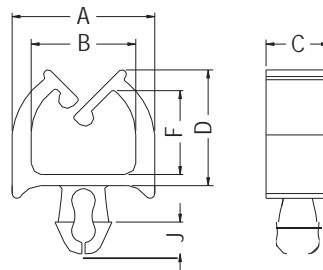
CHASSIS: ØG  
THICKNESS: T

PART NO	A	B	C	G	T	PACKAGE
THCC-1	22.4	18.0	8.0	4.0	2.5	500

## WIRE MOUNT



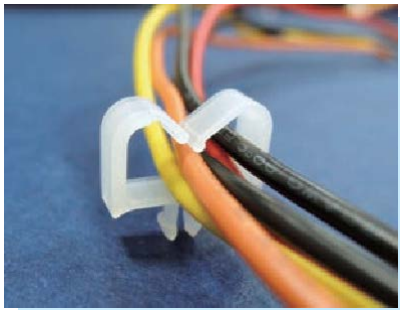
- ◆ MATERIAL: NYLON 66 (UL)
- ◆ FLAME CLASS: 94V-2/94V-0
- ◆ COLOR: NATURAL/BLACK
- ◆ UNIT: mm



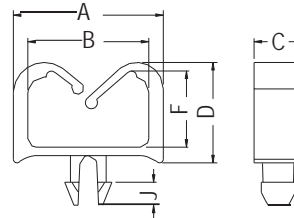
P.C.B: ØG  
THICKNESS: T

PART NO	A	B	C	D	F	G	J	T	PACKAGE
MWSC-1	9.0	6.6	4.0	7.3	5.3	3.0	2.0	1.2-1.6	1000

## WIRE MOUNT



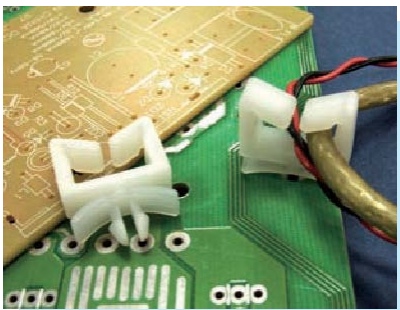
- ◆ MATERIAL: NYLON 66 (UL)
- ◆ FLAME CLASS: 94V-2/94V-0
- ◆ COLOR: NATURAL/BLACK
- ◆ UNIT: mm



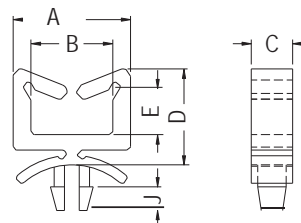
MOUNTING HOLE: ØG  
CHASSIS THICKNESS: T

PART NO	A	B	C	D	F	G	J	T	PACKAGE
MWSC-2	12.4	10.0	4.0	8.3	6.3	3.0	1.9	1.5	1000
MWSC-2L	12.4	10.0	4.0	8.3	6.3	3.0	1.9	2.0	

## WIRE MOUNT



- ◆ MATERIAL: NYLON 66 (UL)
- ◆ FLAME CLASS: 94V-2/94V-0
- ◆ COLOR: NATURAL/BLACK
- ◆ UNIT: mm



CHASSIS: ØG  
THICKNESS: T

PART NO	A	B	C	D	E	G	J	T	PACKAGE
CHAE-1	15.9	11.1	5.6	13.0	6.5	4.8	2.5	0.8-1.6	1000
CHAE-1S	15.9	11.1	5.6	13.0	6.5	4.4	2.5	0.8-1.6	