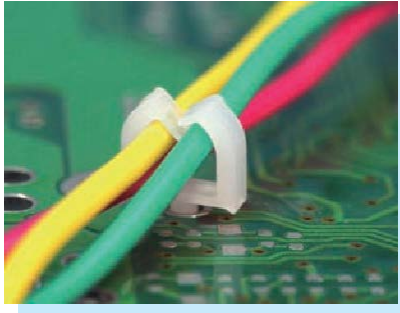
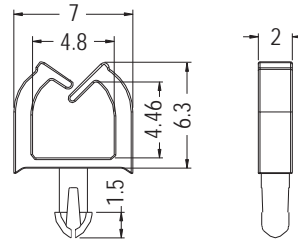


WIRE MOUNT

NEW



- ◆ MATERIAL: NYLON 66 (UL)
- ◆ FLAME CLASS: 94V-2/94V-0
- ◆ COLOR: NATURAL/BLACK
- ◆ UNIT: mm

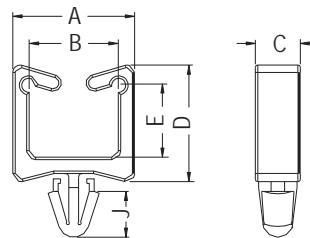
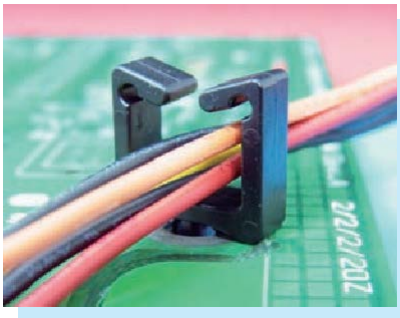


MOUNTING HOLE Ø1.7
THICKNESS 2.4

PART NO	PACKAGE
MWSC-3	1000

WIRE MOUNT

- ◆ MATERIAL: ABS+PC (UL)
- ◆ FLAME CLASS: 94V-0/94V-2
- ◆ COLOR: NATURAL/BLACK
- ◆ UNIT: mm

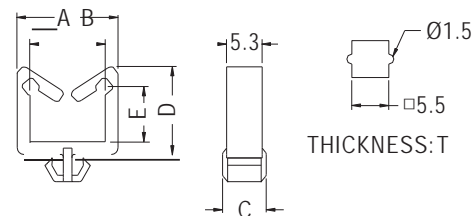
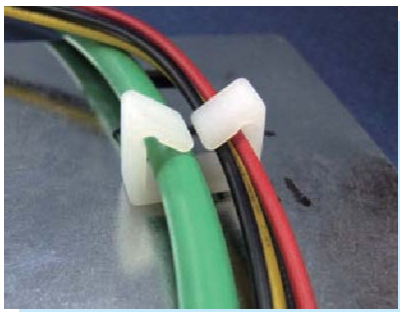


CHASSIS: ØG
THICKNESS: T

PART NO	A	B	C	D	E	G	J	T	PACKAGE
CHAW-1	14.9	10.9	5.5	14.2	8.8	4.8	5.6	1.1	1000

WIRE MOUNT

- ◆ MATERIAL: NYLON 66 (UL)
- ◆ FLAME CLASS: 94V-2/94V-0
- ◆ COLOR: NATURAL/BLACK
- ◆ UNIT: mm



THICKNESS: T

PART NO	A	B	C	D	E	T	PACKAGE
CHAB-1	15.0	11.2	6.5	12.0	7.2	1.0	1000
CHAB-2	15.0	11.2	6.5	17.0	12.2	1.0	500
CHAB-3	15.0	11.2	6.5	26.0	21.2	1.0	

