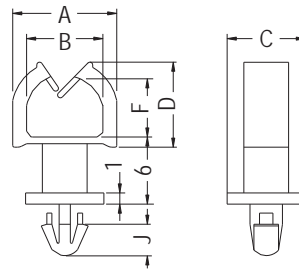


WIRE MOUNT

- ◆ MATERIAL: NYLON 66 (UL)
- ◆ FLAME CLASS: 94V-2/94V-0
- ◆ COLOR: NATURAL/BLACK
- ◆ UNIT: mm

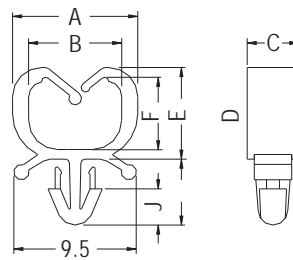
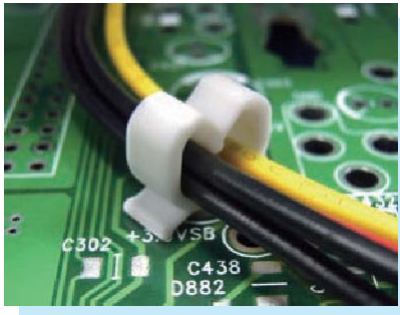


CHASSIS: ØG
THICKNESS: T

PART NO	A	B	C	D	F	G	J	T	PACKAGE
MWSL-6	9.2	6.8	7.0	7.6	5.2	3.0	2.8	1.0~1.6	1000

WIRE MOUNT

- ◆ MATERIAL: NYLON 66 (UL)
- ◆ FLAME CLASS: 94V-2/94V-0
- ◆ COLOR: NATURAL/WHITE/BLACK
- ◆ UNIT: mm

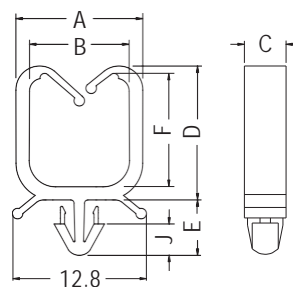


P.C.B: ØG
THICKNESS: T

PART NO	A	B	C	D	E	F	G	J	T	PACKAGE
MWC-2	9.7	7.2	4.0	7.1	4.5	5.6	3.0	2.2	0.6~1.6	2000
MWC-6	9.7	7.2	4.0	7.1	5.1	5.6	3.0	2.8	0.6~1.6	

WIRE MOUNT

- ◆ MATERIAL: NYLON 66 (UL)
- ◆ FLAME CLASS: 94V-2/94V-0
- ◆ COLOR: NATURAL/WHITE/BLACK
- ◆ UNIT: mm



P.C.B: ØG
THICKNESS: T

PART NO	A	B	C	D	E	F	G	J	T	PACKAGE
MWC-3	12.1	9.5	4.0	12.8	4.5	10.9	3.0	2.2	0.6~1.6	2000
MWC-10	12.1	9.5	4.0	12.8	5.3	10.9	3.5	3.0	0.6~1.6	