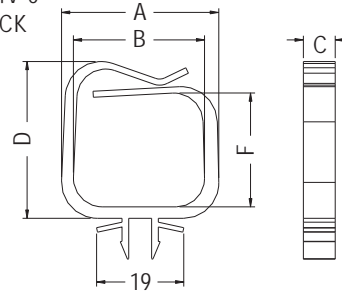


HARNESS CLIP STANDOFF



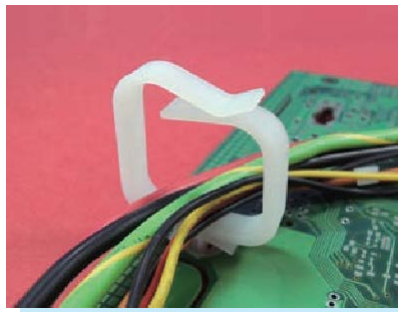
- ◆ MATERIAL: NYLON 66 (UL)
- ◆ FLAME CLASS: 94V-2/94V-0
- ◆ COLOR: NATURAL/BLACK
- ◆ UNIT: mm



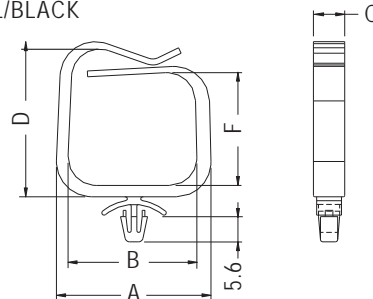
MOUNTING HOLE THICKNESS: T

PART NO	A	B	C	D	F	T	PACKAGE
CHD-19	34.2	28.6	6.95	34.2	24.8	0.8~2.0	250

WIRE MOUNT



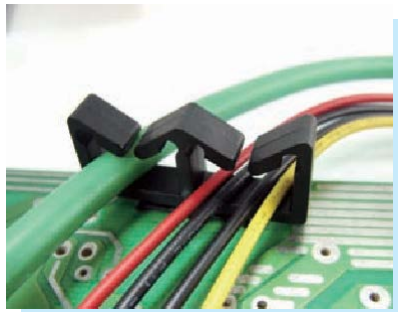
- ◆ MATERIAL: NYLON 66 (UL)
- ◆ FLAME CLASS: 94V-2/94V-0
- ◆ COLOR: NATURAL/BLACK
- ◆ UNIT: mm



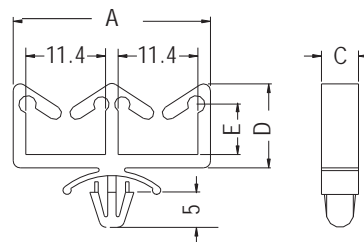
CHASSIS: ØG THICKNESS: T

PART NO	A	B	C	D	F	G	T	PACKAGE
CHD-20	34.3	28.6	6.95	34.4	25.0	4.8	0.8~2.0	250

WIRE MOUNT



- ◆ MATERIAL: NYLON 66 (UL)
- ◆ FLAME CLASS: 94V-2/94V-0
- ◆ COLOR: NATURAL/BLACK
- ◆ UNIT: mm



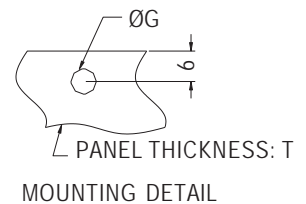
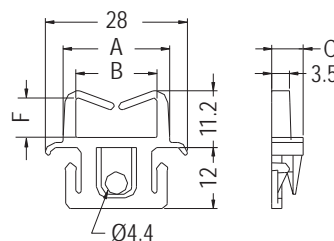
CHASSIS: ØG THICKNESS: T

PART NO	A	C	D	E	G	T	PACKAGE
CHAA-1	28.2	5.3	12.0	7.2	4.8~5.0	1.2~2.1	1000

WIRE MOUNT



- ◆ MATERIAL: NYLON 66 (UL)
- ◆ FLAME CLASS: 94V-2/94V-0
- ◆ COLOR: NATURAL/BLACK
- ◆ UNIT: mm



MOUNTING DETAIL

PART NO	A	B	C	F	G	T	PACKAGE
EDGE-1	21.0	16.0	6.2	7.75	5.0	1.0~2.0	500

