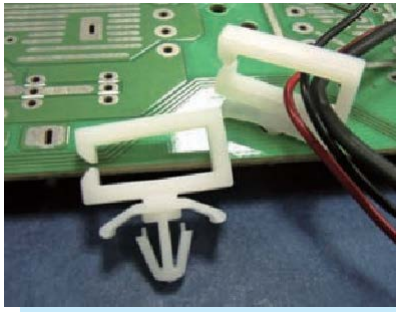
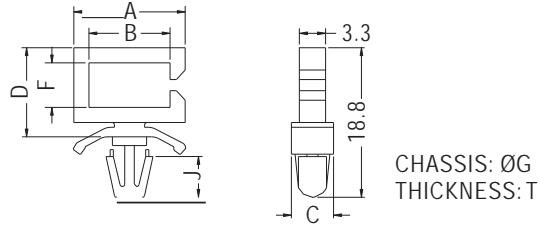


WIRE MOUNT

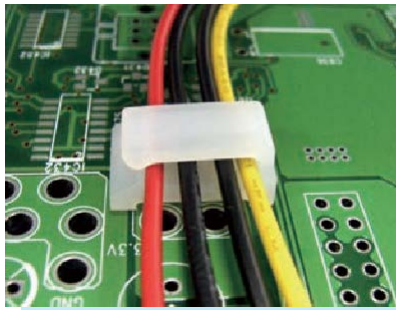


- ◆ MATERIAL: NYLON 66 (UL)
- ◆ FLAME CLASS: 94V-2/94V-0
- ◆ COLOR: NATURAL/BLACK
- ◆ UNIT: mm

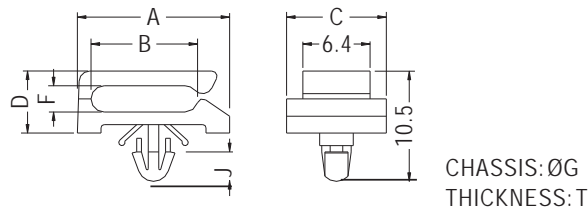


PARTNO	A	B	C	D	F	G	J	T	PACKAGE
WSS-2	14.0	10.2	5.3	11.2	5.6	4.8	5.1	0.8~2.0	1000
WSS-2L	17.0	13.2	5.3	11.2	5.6	4.8	5.1	0.8~2.0	

HARNESS CLIP STANDOFF

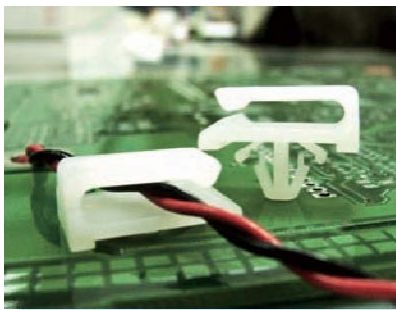


- ◆ MATERIAL: NYLON 66 (UL)
- ◆ FLAME CLASS: 94V-2/94V-0
- ◆ COLOR: NATURAL/BLACK
- ◆ UNIT: mm

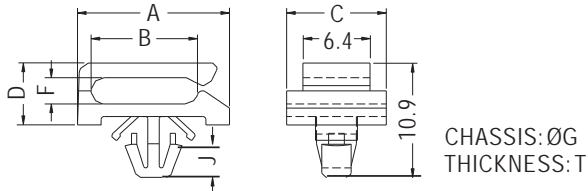


PARTNO	A	B	C	D	F	G	J	T	PACKAGE
MIS-2	14.5	10.2	9.5	5.9	2.5	3.0	2.8	0.6~1.8	2000

HARNESS CLIP STANDOFF

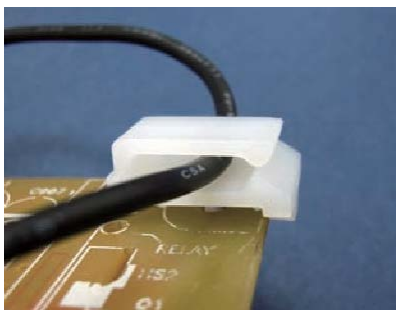


- ◆ MATERIAL: NYLON 66 (UL)
- ◆ FLAME CLASS: 94V-2/94V-0
- ◆ COLOR: NATURAL/BLACK
- ◆ UNIT: mm

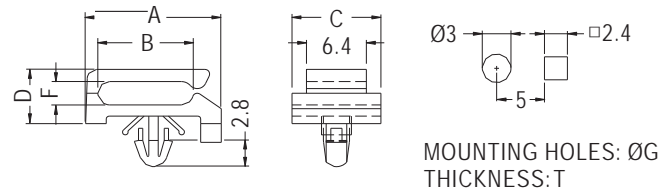


PARTNO	A	B	C	D	F	G	J	T	PACKAGE
MIS-9	14.5	10.15	9.5	5.9	2.5	4.0	3.15	1.6	1000

HARNESS CLIP STANDOFF



- ◆ MATERIAL: NYLON 66 (UL)
- ◆ FLAME CLASS: 94V-2/94V-0
- ◆ COLOR: NATURAL/BLACK
- ◆ UNIT: mm



PARTNO	A	B	C	D	F	G	T	PACKAGE
MIS-11	14.5	10.2	9.5	5.8	2.5	3.0	0.6~1.8	2000
MIS-11L	14.5	10.2	9.5	5.8	2.5	3.0	1.0~2.2	