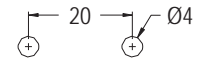
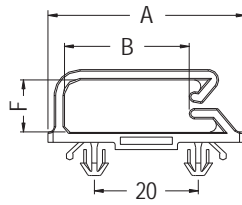


WIRE MOUNT

- ◆ MATERIAL: NYLON 66 (UL)
- ◆ FLAME CLASS: 94V-2/94V-0
- ◆ COLOR: NATURAL/BLACK
- ◆ UNIT: mm

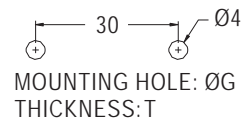
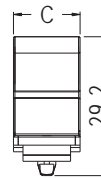
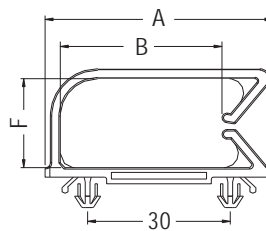


MOUNTING HOLE: ØG
THICKNESS: T

PARTNO	A	B	C	F	G	T	PACKAGE
MIBA-1	37.9	24.0	14.0	18.7	4.0	0.8~2.0	500
MIBA-2	37.9	24.0	14.0	10.0	4.0	0.8~2.0	

WIRE MOUNT

- ◆ MATERIAL: NYLON 66 (UL)
- ◆ FLAME CLASS: 94V-2/94V-0
- ◆ COLOR: NATURAL/BLACK
- ◆ UNIT: mm

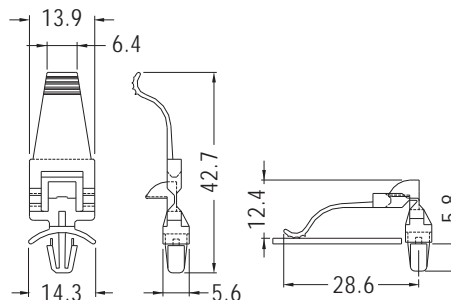
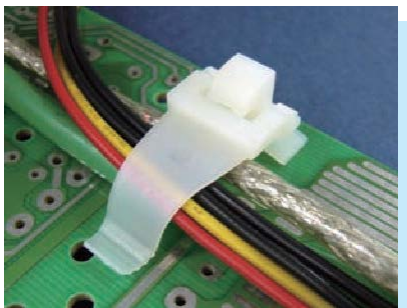


MOUNTING HOLE: ØG
THICKNESS: T

PARTNO	A	B	C	F	G	T	PACKAGE
MIBA-3	47.9	34.0	14.0	18.7	4.0	0.8~2.0	500

CABLE CLAMP

- ◆ MATERIAL: NYLON 66 (UL)
- ◆ FLAME CLASS: 94V-2/94V-0
- ◆ COLOR: NATURAL/BLACK
- ◆ UNIT: mm



CHASSIS Ø4.8
THICKNESS 1.2~2.0

PARTNO	PACKAGE
HFCC-12	1000