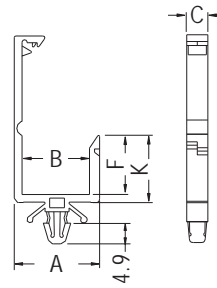
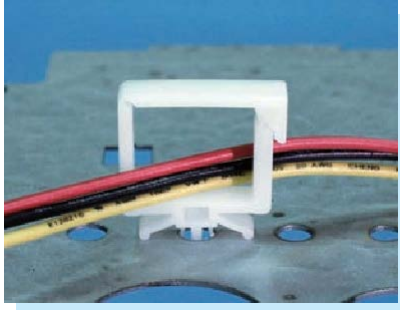


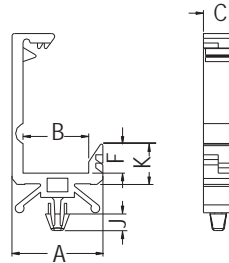
WIRE SADDLE

- ◆ MATERIAL: NYLON 66 (UL)
- ◆ FLAME CLASS: 94V-2/94V-0
- ◆ COLOR: NATURAL/BLACK
- ◆ UNIT: mm



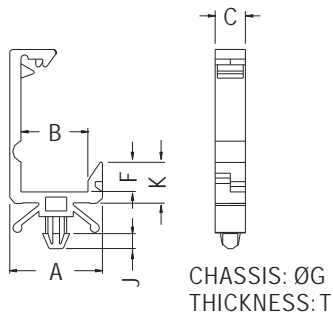
CHASSIS: ØG
THICKNESS: T

PART NO	A	B	C	F	G	K	T	PACKAGE	UL
CHC-1	20.25	16.0	5.0	14.0	4.8-5.0	15.9	1.2-2.4	500	UL
CHC-2	15.35	11.1	5.0	9.9	4.8-5.0	11.8	1.2-2.4		UL
CHC-3	15.35	11.1	5.0	4.9	4.8-5.0	6.8	1.2-2.4		UL
CHC-5	27.0	22.8	5.0	12.85	4.8	14.85	0.5-1.0		



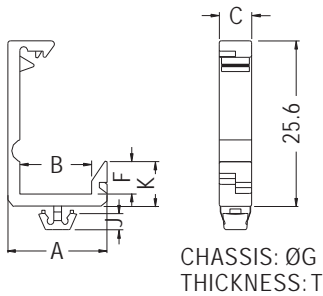
CHASSIS: ØG
THICKNESS: T

PART NO	A	B	C	F	G	J	K	T	PACKAGE
CHCS-1	15.35	11.1	5.0	4.9	3.0	2.8	6.8	0.8-2.5	500



CHASSIS: ØG
THICKNESS: T

PART NO	A	B	C	F	G	J	K	T	PACKAGE
CHH-1	15.35	11.1	5.0	4.9	3.5	2.5	6.8	0.8-2.5	500
CHH-2	15.35	11.1	5.0	9.9	3.5	2.5	11.8	0.8-2.5	

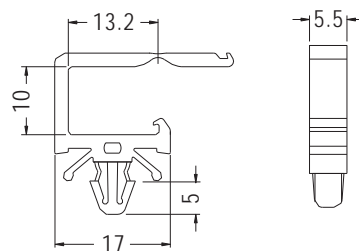
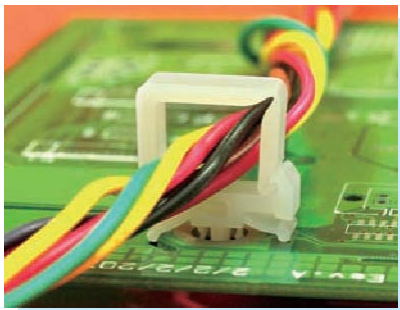


CHASSIS: ØG
THICKNESS: T

PART NO	A	B	C	F	G	J	K	T	PACKAGE
CHC-4	15.35	11.1	5.0	5.0	4.8	2.5	6.9	1.0	500

WIRE MOUNT

- ◆ MATERIAL: NYLON 66 (UL)
- ◆ FLAME CLASS: 94V-2/94V-0
- ◆ COLOR: NATURAL/BLACK
- ◆ UNIT: mm



MOUNTING HOLE Ø4.8-Ø5.0
THICKNESS 1.2-2.4

PART NO	PACKAGE
CHC-6	1000