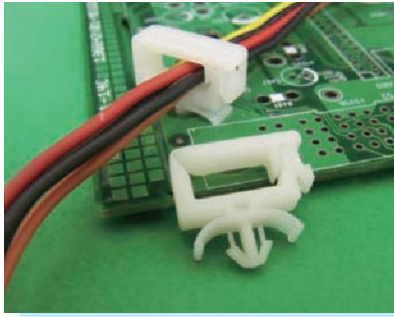
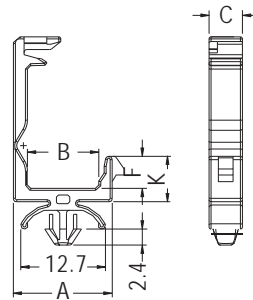


# WIRE MOUNT



- ◆ MATERIAL: NYLON 66 (UL)
- ◆ FLAME CLASS: 94V-2/94V-0
- ◆ COLOR: NATURAL/BLACK
- ◆ UNIT: mm



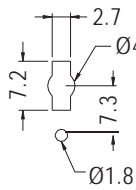
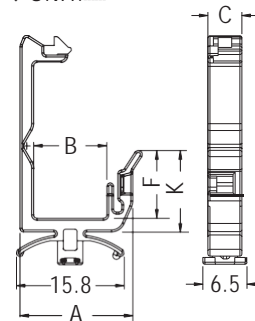
CHASSIS: ØG  
THICKNESS: T

| PARTNO | A    | B    | C   | F   | G   | K   | T       | PACKAGE |
|--------|------|------|-----|-----|-----|-----|---------|---------|
| CHZB-1 | 14.8 | 10.7 | 5.0 | 4.8 | 4.0 | 6.8 | 0.8-2.5 | 500     |

# WIRE MOUNT



- ◆ MATERIAL: NYLON 66 (UL)
- ◆ FLAME CLASS: 94V-2/94V-0
- ◆ COLOR: NATURAL/BLACK
- ◆ UNIT: mm



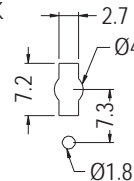
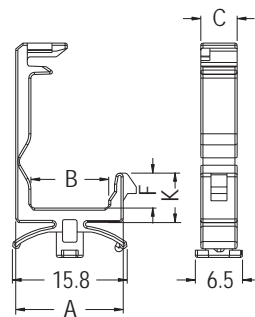
MOUNTING HOLES  
THICKNESS 0.8-1.6

| PARTNO | A    | B    | C   | F     | K     | PACKAGE |
|--------|------|------|-----|-------|-------|---------|
| CHZ-1  | 16.5 | 10.7 | 5.0 | 9.95  | 11.95 | 500     |
| CHZ-2  | 22.1 | 16.3 |     | 10.85 | 12.85 |         |
| CHZ-3  | 22.1 | 16.3 |     | 14.95 | 16.95 |         |
| CHZ-4  | 23.8 | 18.0 |     | 22.55 | 24.55 |         |

# WIRE MOUNT



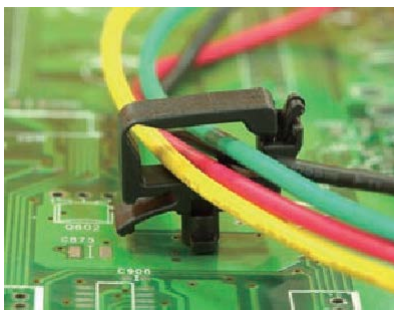
- ◆ MATERIAL: NYLON 66 (UL)
- ◆ FLAME CLASS: 94V-2/94V-0
- ◆ COLOR: NATURAL/BLACK
- ◆ UNIT: mm



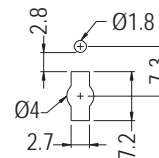
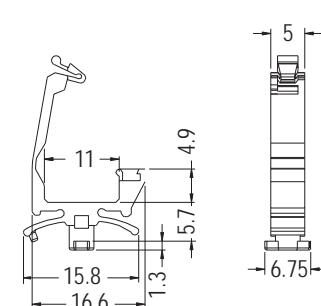
MOUNTING HOLES  
THICKNESS 0.8-1.6

| PARTNO | A    | B    | C   | F    | K    | PACKAGE |
|--------|------|------|-----|------|------|---------|
| CHZA-1 | 14.8 | 10.7 | 5.0 | 4.8  | 6.8  | 500     |
| CHZA-2 | 14.8 | 10.7 | 5.0 | 9.0  | 11.0 |         |
| CHZA-3 | 20.4 | 16.3 | 5.0 | 9.9  | 11.9 |         |
| CHZA-4 | 20.4 | 16.3 | 5.0 | 14.0 | 16.0 |         |
| CHZA-5 | 22.1 | 18.0 | 5.0 | 21.6 | 23.6 |         |

# WIRE MOUNT



- ◆ MATERIAL: NYLON 66 (UL)
- ◆ FLAME CLASS: 94V-2/94V-0
- ◆ COLOR: NATURAL/BLACK
- ◆ UNIT: mm



MOUNTING HOLES  
THICKNESS 0.8-2.0

| PARTNO | PACKAGE |
|--------|---------|
| CHKA-1 | 1000    |

