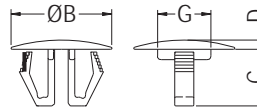


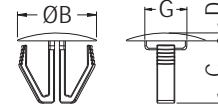
HOLE PLUGS



- ◆ MATERIAL: NYLON 66 (UL)
- ◆ FLAME CLASS: 94V-2/94V-0
- ◆ COLOR: NATURAL/WHITE/BLACK
- ◆ UNIT: mm



MOUNTING HOLE: ØA
THICKNESS: E

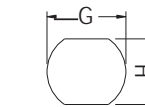
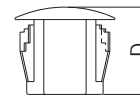
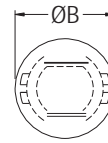


MOUNTING HOLE: ØA
THICKNESS: E
FOR MBWK4-1

PART NO	A	B	C	D	G	E	PACKAGE
MBWK-1	11.0~14.0	18.5	10.4	1.7	9.8	0.8~3.5	500
MBWK-2	22.0~26.0	30.0	11.6	1.9	15.5		
MBWK4-1	9.5~11.0	16.0	12.6	1.6	8.5	0.8~3.2	

HOLE PLUGS

- ◆ MATERIAL: NYLON 66 (UL)
- ◆ FLAME CLASS: 94V-2/94V-0
- ◆ COLOR: NATURAL/BLACK
- ◆ UNIT: mm



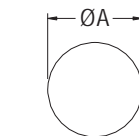
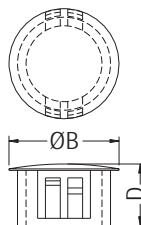
MOUNTING HOLE
THICKNESS: E



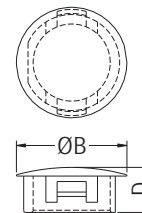
PART NO	B	D	E	G	H	PACKAGE
M9.5U	12.0	10.5	0.8~3.5	9.5	7.9	1000
M12U	16.2	10.6	0.8~3.0	12.7	11.5	500
M16U	18.6	10.6	0.8~3.5	15.9	14.0	
M19U	22.7	10.6	0.8~3.0	19.0	16.5	
M22U	25.6	10.6	0.8~3.3	22.1	20.5	

HOLE PLUGS

- ◆ MATERIAL: NYLON 66 (UL)
- ◆ FLAME CLASS: 94V-2/94V-0
- ◆ COLOR: NATURAL/WHITE/BLACK
- ◆ UNIT: mm



MOUNTING HOLE
THICKNESS: E MAX.



THICKNESS: E MAX.
FOR M13.5



PART NO	A	B	D	E	PACKAGE	UL
M04	4.8	6.35	5.5	1.6	2000	UL
M06	6.4	7.6	5.6	1.6		UL
M07	7.0	10.9	7.0	0.8~1.8		UL
M07S	7.0	8.7	6.4	1.8		UL
M08	8.0	9.5	7.6	1.6	1000	UL
M09A	9.0	11.5	10.1	3.3		UL
M09S	9.5	13.0	5.5	1.4		UL
M09	9.5	11.9	10.1	3.3		UL
M10	10.3	11.9	6.4	1.6	500	UL
M11	11.0	14.0	10.1	3.3		UL
M12	12.0	14.3	10.1	3.3		UL
M13	12.7	14.6	10.1	3.3		UL
M13.5	13.5	15.2	6.2	2.2		UL
M14	14.0	16.3	10.1	3.3		UL
M15	15.0	17.3	10.1	3.3		UL
M16	16.0	18.7	10.6	3.3		UL

PART NO	A	B	D	E	PACKAGE	UL
M16S	15.9	20.0	7.7	2.0	1000	UL
M17	17.0	19.3	10.1	3.3	500	UL
M19	19.0	23.2	10.3	3.3		UL
M20	20.0	24.0	10.6	3.3		UL
M22	22.2	25.4	11.0	3.3		UL
M25	25.4	28.4	11.0	3.3	200	UL
M28	28.0	32.0	13.5	3.3		UL
M30	30.0	34.2	11.3	3.3		UL
★ M30L	30.1	34.0	11.8	0.8~3.2		
M32	32.0	36.0	12.0	3.3		UL
M35	35.0	38.1	11.5	3.2		
M38	38.1	42.4	11.8	3.2		
M44	44.5	48.4	11.8	3.2		
M50	50.8	56.4	17.0	6.4	UL	
M53	53.0	57.5	19.0	0.8~6.5	UL	
M63	63.5	71.2	19.1	0.8~6.4		

