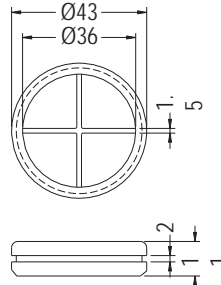


RUBBER PLUGS



- ◆ MATERIAL:CR (UL)
- ◆ FLAME CLASS:94V-2
- ◆ COLOR:BLACK
- ◆ UNIT:mm



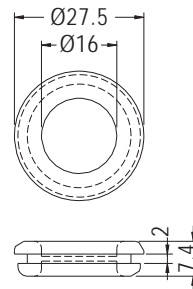
MOUNTING HOLE Ø40.0
THICKNESS 2.0

| PART NO | PACKAGE |
|---------|---------|
| DGB-40 | 500 |

5

HOLE PLUGS

- ◆ MATERIAL:TPE
- ◆ COLOR:BLACK
- ◆ UNIT:mm

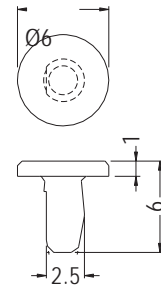


MOUNTING HOLE Ø22.0

| PART NO | PACKAGE |
|---------|---------|
| GDBB-1 | 1000 |

HOLE PLUGS

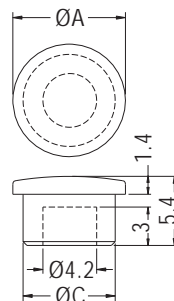
- ◆ MATERIAL:EPDM
- ◆ COLOR:BLACK
- ◆ UNIT:mm



| PART NO | PACKAGE |
|---------|---------|
| TF-222 | 1000 |

HOLE PLUGS

- ◆ MATERIAL:SILICON RUBBER
- ◆ COLOR:BLACK
- ◆ UNIT:mm



MOUNTING HOLE: ØB

| PART NO | A | B | C | PACKAGE |
|---------|-----|-----|-----|---------|
| TF-0391 | 8.8 | 7.0 | 7.2 | 1000 |

