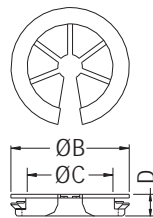
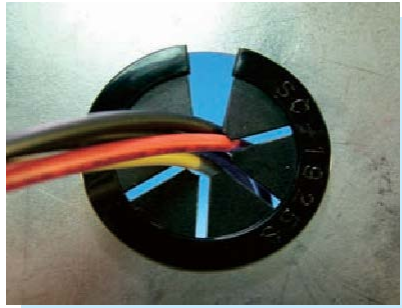
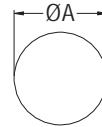


# SNAP BUSHING

- ◆ MATERIAL: NYLON 66 (UL)
- ◆ FLAME CLASS: 94V-2/94V-0
- ◆ COLOR: BLACK
- ◆ UNIT: mm



THICKNESS: E



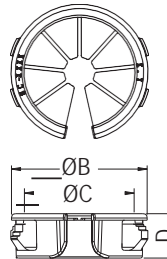
MOUNTING HOLE



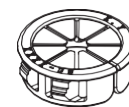
PART NO	A	B	C	D	E	PACKAGE
SC-1925S	25.4	29.0	21.0	5.3	0.8-1.0	250
SC-1925A	25.4	29.0	21.0	11.4	0.8-3.0	
SC-1319A	19.0	22.6	15.3	9.75	0.8-3.2	500

# SNAP BUSHING

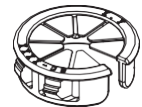
- ◆ MATERIAL: NYLON 66 (UL)
- ◆ FLAME CLASS: 94V-2/94V-0
- ◆ COLOR: BLACK
- ◆ UNIT: mm



MOUNTING HOLE  
CHASSIS THICKNESS: E



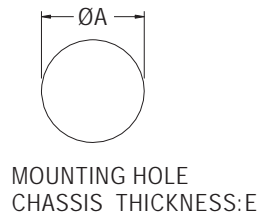
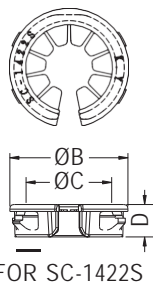
CLOSE



OPEN

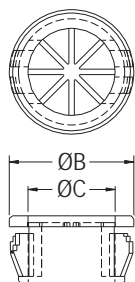


PART NO	DIMENSION					PACKAGE	UL
	A	B	C	D	E		
SC-0712	12.7	15.3	10.3	9.8	0.8-3.3	1000	UL
SC-1115	15.9	18.8	13.8	10.3			UL
SC-1422	22.2	25.5	18.5	7.0		250	UL
SC-1422S	22.2	25.5	18.5		0.6-1.2		UL
SC-2027	27.8	31.5	25.5	10.3	0.8-3.3	100	UL
SC-2331	31.8	38.7	29.3				UL
SC-2534	34.9	39.2	31.2				UL
SC-2638	38.1	42.6	32.6	10.7			UL

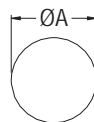


# SNAP BUSHING

- ◆ MATERIAL: NYLON 66 (UL)
- ◆ FLAME CLASS: 94V-2/94V-0
- ◆ COLOR: BLACK
- ◆ UNIT: mm



THICKNESS: E MAX.



MOUNTING HOLE



PART NO	A	B	C	D	E	PACKAGE
SC-1216	15.9	18.3	12.8	10.3	3.2	1000

