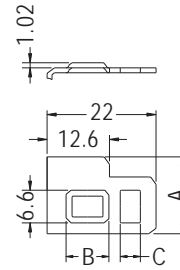
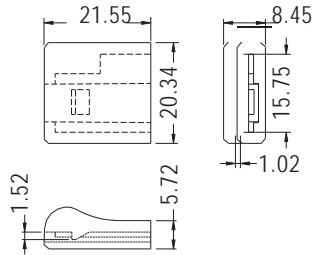


# HANDLE



- ◆ MATERIAL:TPE
- ◆ FLAME CLASS:94V-0
- ◆ COLOR:BLACK/PURPLE/GREEN/BLUE
- ◆ UNIT:mm



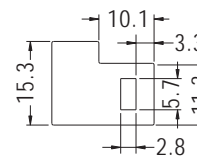
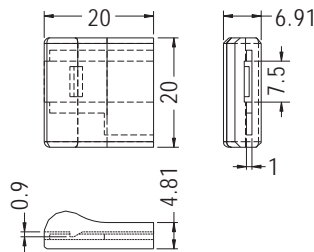
ASSEMBLY PART

PART NO	A	B	C	PACKAGE
HANE-21	15.52	8.64	4.06	250
HANE-21L	15.2	9.2	3.9	

# HANDLE



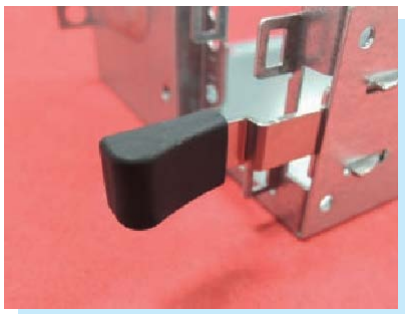
- ◆ MATERIAL:SANTOPREN
- ◆ COLOR:BLACK/ORANGE/GRAY
- ◆ UNIT:mm



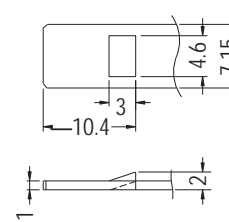
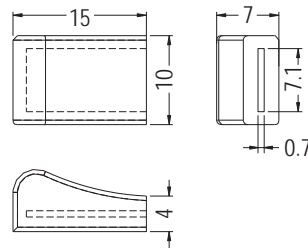
ASSEMBLY PART  
THICKNESS 0.8

PART NO	PACKAGE
HANE-35	250

# HANDLE



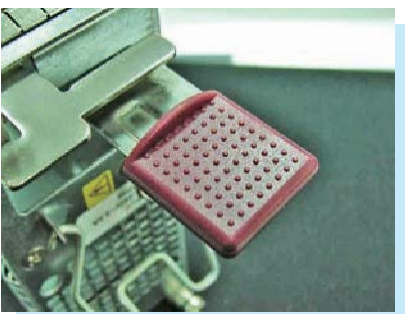
- ◆ MATERIAL:TPR
- ◆ COLOR:BLACK
- ◆ UNIT:mm



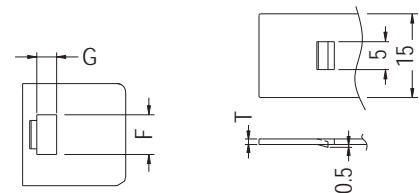
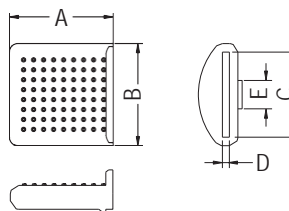
ASSEMBLY PART

PART NO	PACKAGE
HANE-59	500

# HANDLE



- ◆ MATERIAL:PC+ABS (UL)
- ◆ FLAME CLASS:94V-2/94V-0
- ◆ COLOR:BLACK/PURPLE
- ◆ UNIT:mm



ASSEMBLY PART

PARTNO	A	B	C	D	E	F	G	T	PACKAGE
HANE18	18.47	18.29	15.24	1.24	5.08	7.11	3.56	1.0	250
HANE18LV	18.47	18.29	15.24	1.4	5.08	7.11	3.56	1.2	
HANE 29	18.5	18.3	15.1	1.2	5.1	7.0	3.2	1.0	

