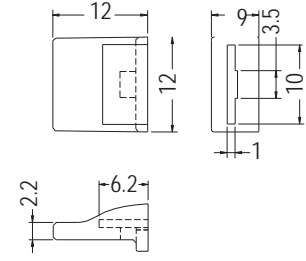
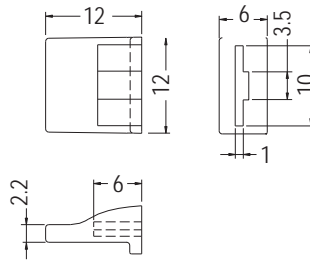


# HANDLE

- ◆ MATERIAL: NYLON 66 (UL)
- ◆ FLAME CLASS: 94V-2/94V-0
- ◆ COLOR: BLACK/BLUE/ORANG
- ◆ UNIT: mm



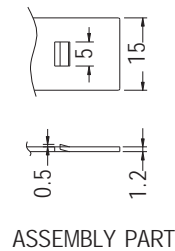
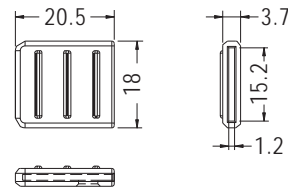
PART NO	PACKAGE
HANE-26	1000

PART NO	PACKAGE
HANE-38	1000

# HANDLE



- ◆ MATERIAL: PC+ABS (UL)
- ◆ FLAME CLASS: 94V-0
- ◆ COLOR: BLUE
- ◆ UNIT: mm

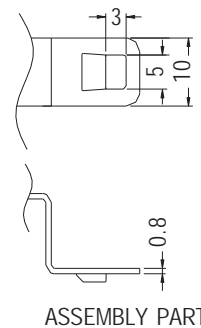
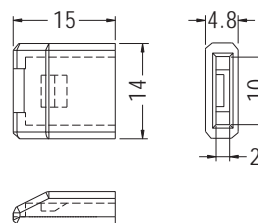


PART NO	PACKAGE
HANE-74	1000

# HANDLE



- ◆ MATERIAL: TPE (UL)
- ◆ FLAME CLASS: 94V-0
- ◆ COLOR: ORANGE
- ◆ UNIT: mm



PART NO	PACKAGE
HANE-75	1000