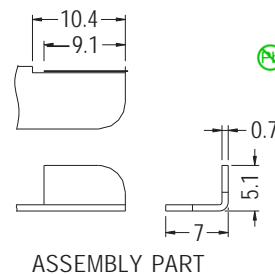
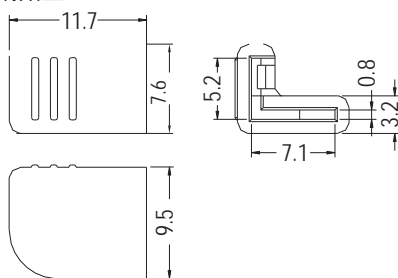


HANDLE



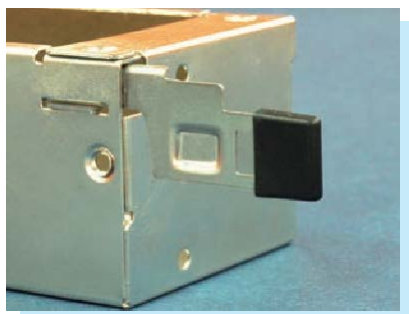
- ◆ MATERIAL: NYLON 66 (UL)
- ◆ FLAME CLASS: 94V-2/94V-0
- ◆ COLOR: BLACK
- ◆ UNIT: mm



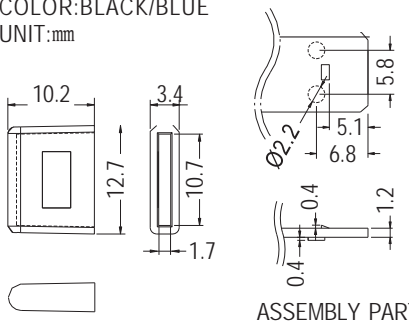
ASSEMBLY PART

PART NO	PACKAGE
HANE-30	1000

HANDLE



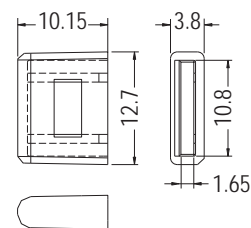
- ◆ MATERIAL: PC+ABS
- ◆ COLOR: BLACK/BLUE
- ◆ UNIT: mm



ASSEMBLY PART

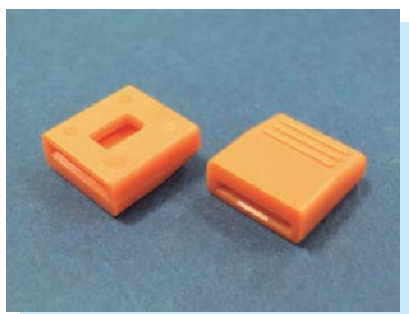
PART NO	PACKAGE
HANE-27	250

- ◆ MATERIAL: NYLON 66 (UL)
- ◆ FLAME CLASS: 94V-2/94V-0
- ◆ COLOR: BLACK
- ◆ UNIT: mm

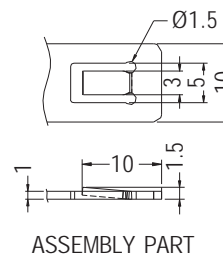
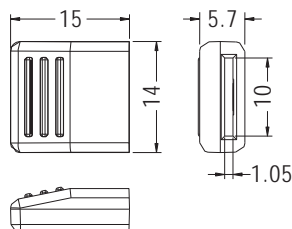


PART NO	PACKAGE
HANE-72	250

HANDLE



- ◆ MATERIAL: PC+ABS (UL)
- ◆ FLAME CLASS: 94V-2
- ◆ COLOR: ORANGE/RED
- ◆ UNIT: mm



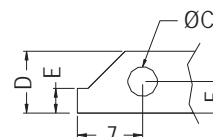
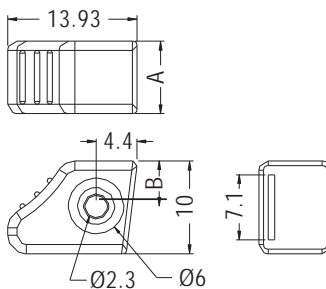
ASSEMBLY PART

PART NO	PACKAGE
HANE-58	250

HANDLE



- ◆ MATERIAL: ABS/PC (UL)
- ◆ FLAME CLASS: 94HB/94V-2
- ◆ COLOR: BLACK/RED
- ◆ UNIT: mm



ASSEMBLY PART
THICKNESS: T

PART NO	A	B	C	D	E	F	T	PACKAGE
HANE-46	7.8	4.84	3.2	6.6	2.6	3.4	0.6	1000
★ HANE-76	5.0	5.0	4.0	7.0	3.0	3.5	0.7	