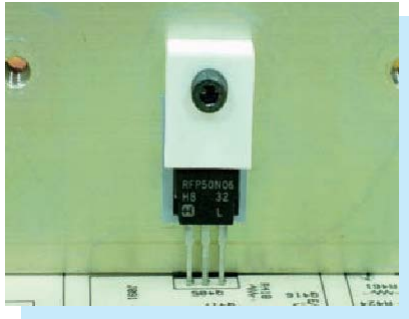
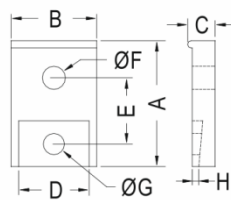


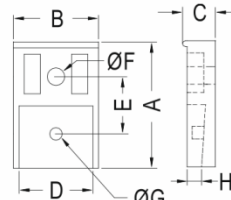
TRANSISTOR COVER



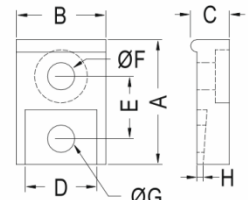
- ◆ MATERIAL:PBT (UL)/NYLON66 (UL)
- ◆ FLAME CLASS:94V-2/94V-0
- ◆ COLOR:NATURAL/BLACK
- ◆ UNIT:mm



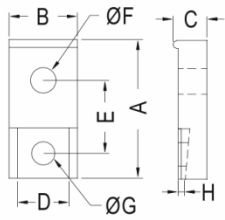
TC-1/TC-1A/TC-1C/TC-2/
TC-16/TC-18/TC-19



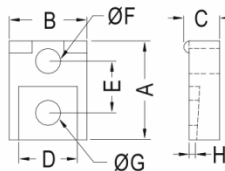
TC-3



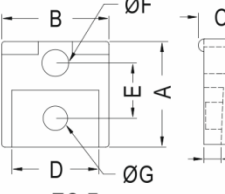
TC-4



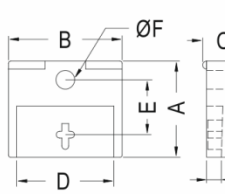
TC-5A



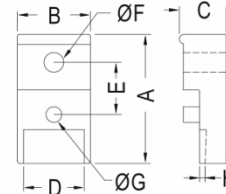
TC-6



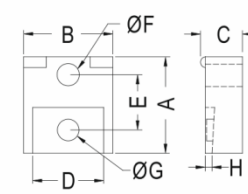
TC-7



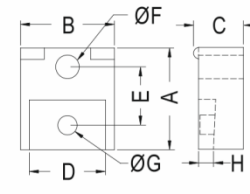
TC-8



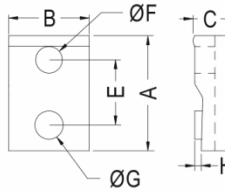
TC-9



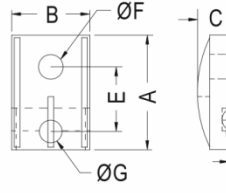
TC-10/TC-56



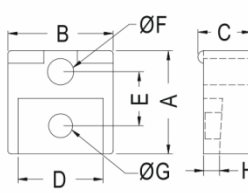
TC-11



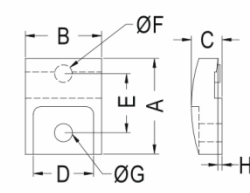
TC-13



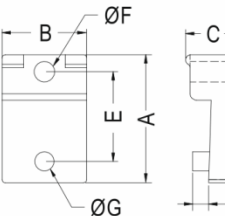
TC-20



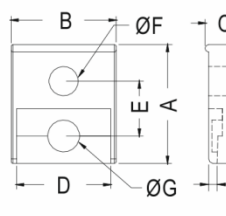
TC-22



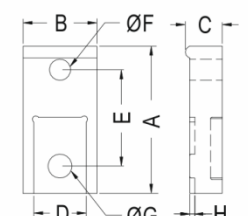
TC-23/TC-45



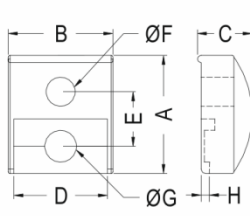
TC-35



TC-38



TC-40



TC-46

| PART NO | A | B | C | D | E | F | G | H | PACKAGE |
|---------|-------|------|-----|------|------|-----|-----|------|---------|
| TC-1 | 16.0 | 13.0 | 6.2 | 10.7 | 8.0 | 3.5 | 3.4 | 0.8 | TO-220 |
| TC-1A | 19.3 | 13.0 | 6.2 | 10.7 | 10.0 | 3.6 | 3.4 | 0.8 | |
| TC-1C | 17.8 | 13.0 | 6.3 | 10.7 | 9.3 | 3.5 | 3.3 | 0.7 | |
| TC-2 | 19.0 | 18.0 | 8.0 | 16.0 | 10.5 | 3.5 | 3.5 | 1.0 | TO-218 |
| TC-3 | 28.0 | 19.0 | 8.8 | 16.5 | 12.8 | 3.9 | 2.8 | 4.0 | TO-3P |
| TC-4 | 16.0 | 13.0 | 6.2 | 10.7 | 8.0 | 3.5 | 3.5 | 0.8 | TO-220 |
| TC-5A | 16.0 | 13.0 | 6.2 | 10.5 | 8.0 | 3.5 | 3.5 | 0.8 | |
| TC-6 | 13.0 | 13.2 | 6.2 | 10.7 | 6.8 | 3.3 | 3.3 | 0.8 | |
| TC-7 | 13.0 | 13.2 | 7.0 | 10.7 | 6.8 | 3.3 | 3.0 | 2.1 | TO-220 |
| TC-8 | 20.0 | 25.4 | 7.0 | 22.5 | 12.7 | 3.3 | | 2.6 | |
| TC-9 | 23.0 | 12.9 | 8.3 | 10.8 | 9.3 | 3.5 | 2.8 | 1.0 | |
| TC-10 | 14.3 | 13.2 | 6.2 | 10.5 | 8.2 | 3.3 | 3.2 | 1.0 | TO-220 |
| TC-11 | 14.3 | 13.2 | 7.0 | 10.7 | 8.2 | 3.3 | 2.7 | 2.1 | |
| TC-13 | 14.3 | 10.0 | 4.2 | | 8.1 | 3.3 | 3.5 | 0.8 | |
| TC-16 | 22.5 | 13.0 | 6.3 | 10.5 | 15.0 | 3.5 | 3.5 | 0.8 | TO-220 |
| TC-18 | 16.0 | 13.0 | 6.2 | 10.7 | 8.0 | 3.5 | 3.5 | 0.5 | TO-220 |
| TC-19 | 30.0 | 18.0 | 8.0 | 15.7 | 17.0 | 3.6 | 2.8 | 2.0 | TO-3P |
| TC-20 | 17.7 | 12.1 | 5.6 | | 10.0 | 3.8 | 3.5 | 0.7 | TO-220 |
| TC-22 | 13.0 | 13.2 | 6.7 | 10.7 | 7.1 | 3.3 | 2.8 | 2.0 | |
| TC-23 | 19.1 | 15.2 | 6.1 | 12.0 | 11.8 | 3.6 | 3.5 | 0.8 | |
| TC-35 | 20.0 | 13.2 | 8.3 | | 14.0 | 3.2 | 3.0 | 2.5 | TO-218 |
| TC-38 | 13.0 | 11.5 | 4.0 | 10.3 | 6.0 | 3.2 | 3.5 | 0.9 | |
| TC-40 | 21.55 | 10.8 | 5.4 | 8.3 | 14.1 | 3.1 | 3.5 | 0.75 | |
| TC-45 | 22.2 | 15.2 | 6.1 | 12.0 | 14.9 | 3.6 | 3.5 | 0.8 | TO-218 |
| TC-46 | 13.0 | 11.5 | 6.0 | 10.3 | 6.0 | 3.2 | 3.5 | 0.9 | TO-220 |
| TC-56 | 14.3 | 13.2 | 6.2 | 10.5 | 8.2 | 3.3 | 3.2 | 0.5 | TO-220 |

