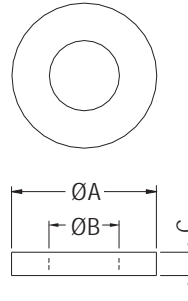


# WASHER

- ◆ MATERIAL: NYLON 66/NYLON 6(UL)
- ◆ COLOR: NATURAL/BLACK
- ◆ UNIT: mm

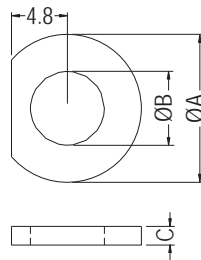


PART NO	A	B	C
WS8-1	18.0	8.2	1.0
WS19-11-1.6	19.0	11.0	1.6
WS12.1-2.5	19.0	12.1	2.5
WS19-14-3.2	19.05	14.35	3.18
WS5-1.2	19.5	5.0	1.2
WS20-6.5-2	20.0	6.5	2.0
WS17-1.3	20.2	17.8	1.3
WS14-3.6	20.3	14.5	3.65
WS14-4	20.3	14.5	4.0
WS10-3	20.7	10.0	3.0
WS21-10-2	21.0	10.5	2.0
WS19.1-0.5	21.8	19.1	0.5
WS13-2	23.0	13.0	2.0
WS8-3	24.0	8.05	3.0

PART NO	A	B	C
WS16.1-3	24.0	16.1	3.0
WS25-10	25.0	14.5	10.0
WS29-17-3	29.5	17.2	3.0
WS30-6-1.5	30.0	6.0	1.5
WS20.1-3.5	30.0	20.1	3.5
WS33-28-15	33.5	28.5	1.5
★ WS22.1-4	34.75	22.1	4.0
WS34-26-1	34.8	26.2	1.0
★ WS24.1-4	36.0	24.1	4.0
WS2905U	38.0	29.0	0.5
★ WS27.1-4.5	39.0	27.1	4.5
WS421905	42.0	19.0	0.5
WS40-1.5	45.5	40.0	1.5

# WASHER

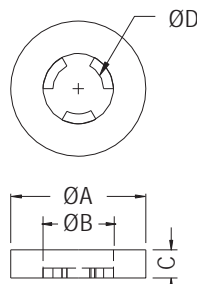
- ◆ MATERIAL: NYLON 66 (UL)
- ◆ FLAME CLASS: 94V-2/94V-0
- ◆ COLOR: NATURAL/BLACK
- ◆ UNIT: mm



PART NO	A	B	C	PACKAGE
WSA6-1.5	12.7	6.35	1.58	1000
WSA6-6.3	12.7	6.35	6.35	

# SCREW WASHER

- ◆ MATERIAL: NYLON 66 (UL)
- ◆ FLAME CLASS: 94V-2/94V-0
- ◆ COLOR: NATURAL/BLACK
- ◆ UNIT: mm



FOR M2 SCREW

PART NO	A	B	C	D	PACKAGE
KWS2-05	4.8	2.5	0.5	1.8	2000
KWS2-08	4.8	2.5	0.8	1.8	
KWS2-10	4.8	2.5	1.0	1.8	
KWS2-15	4.8	2.5	1.5	1.8	
KWS2-20	4.8	2.5	2.0	1.8	
KWS2-25	4.8	2.5	2.5	1.8	

