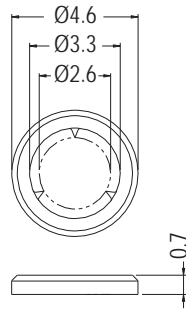


# SCREW WASHER



- ◆ MATERIAL: NYLON 66 (UL)
- ◆ FLAME CLASS: 94V-2/94V-0
- ◆ COLOR: NATURAL/BLACK/ORANGE
- ◆ UNIT: mm

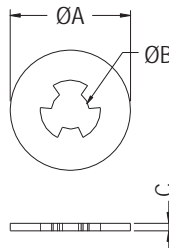


PART NO	PACKAGE
KWA3-0.7	1000

# SCREW WASHER

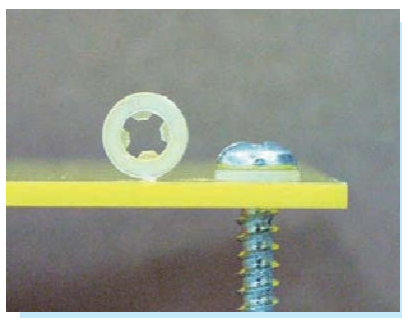


- ◆ MATERIAL: NYLON 6 (UL)
- ◆ FLAME CLASS: 94HB
- ◆ COLOR: NATURAL
- ◆ UNIT: mm

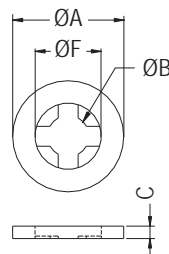


PART NO	A	B	C	PACKAGE
KWS-2.6	4.8	2.2	0.5	2000
KWS-2.6-08	4.8	2.2	0.8	
KWS-2.6-1	4.8	2.2	1.0	
KYWS-3	8.0	2.5	0.5	

# SCREW WASHER



- ◆ MATERIAL: NYLON 66 (UL)
- ◆ FLAME CLASS: 94V-2/94V-0
- ◆ COLOR: NATURAL/BLACK
- ◆ UNIT: mm



FOR SCREW: G

PART NO	A	B	C	F	G	PACKAGE
KWS-3S	5.0	2.5	0.6	4.0	M3	2000
KWS-3	6.7	2.5	0.8	4.0	M3	
KWS-3-1.2	6.7	2.5	1.2	3.5	M3	
KWS-4	8.0	3.3	1.0	5.0	M4	
KWS-4.6	15.0	4.6	0.9	9.5	M4	
KWS-5	15.0	5.0	0.9	9.5	M5	
KWS-6	15.0	5.8	0.9	9.5	M6	
KWS-632	8.3	3.2	0.8	5.0	6-32 UNC	
KWS-632-1.6	8.35	3.15	1.64	9.46	6-32 UNC	

