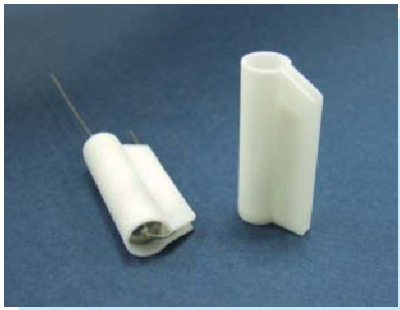
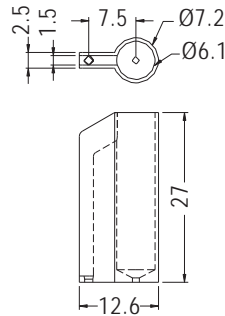


# FUSE HOLDER



- ◆ MATERIAL: NYLON 66 (UL)
- ◆ FLAME CLASS: 94V-2/94V-0
- ◆ COLOR: NATURAL/BLACK
- ◆ UNIT: mm

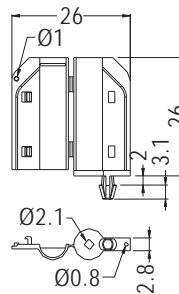


PART NO	PACKAGE
FUSCV-1	500

# FUSE HOLDER



- ◆ MATERIAL: NYLON 66 (UL)
- ◆ FLAME CLASS: 94V-2/94V-0
- ◆ COLOR: NATURAL/BLACK
- ◆ UNIT: mm



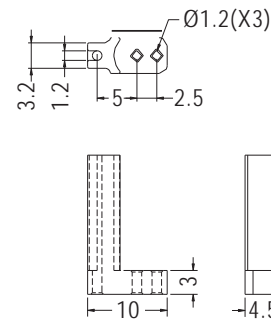
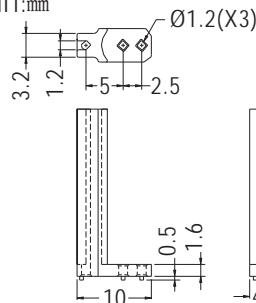
Ø1-Ø1.2 → 4 → Ø3  
MOUNTING HOLES

PART NO	PACKAGE
FUSCV-3	500

# FUSE HOLDER



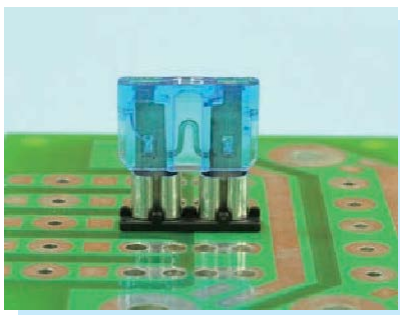
- ◆ MATERIAL: PBT (UL)
- ◆ FLAME CLASS: 94V-0
- ◆ COLOR: NATURAL
- ◆ UNIT: mm



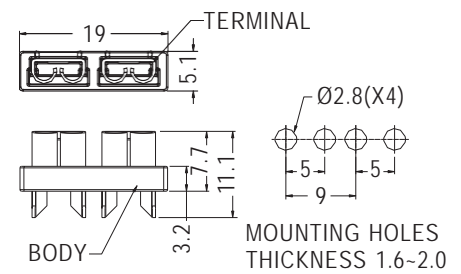
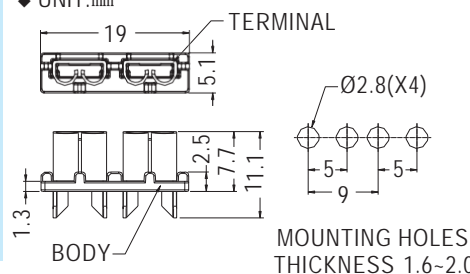
PART NO	PACKAGE
FUSCV-2	500

PART NO	PACKAGE
FUSCV-4	500

# FUSE HOLDER



- ◆ BODY MATERIAL: NYLON 66 (UL)
- ◆ TERMINA MATERIAL: TIN PLATED BRASS
- ◆ FLAME CLASS: 94V-2/94V-0
- ◆ COLOR: NATURAL/BLACK
- ◆ UNIT: mm



PART NO	PACKAGE
FUSCV-6F	1000

PART NO	PACKAGE
FUSCV-7F	1000

