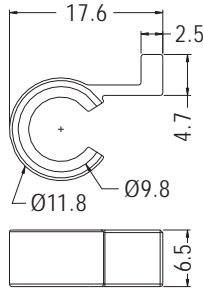


# CAPACITOR MOUNT

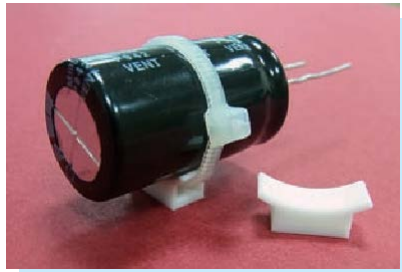


- ◆ MATERIAL: NYLON 66 (UL)
- ◆ FLAME CLASS: 94V-2/94V-0
- ◆ COLOR: NATURAL/BLACK
- ◆ UNIT: mm

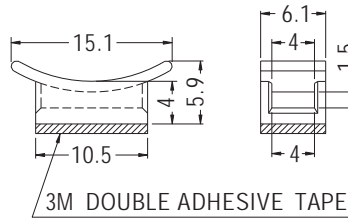


PART NO	PACKAGE
CWCK-10	1000

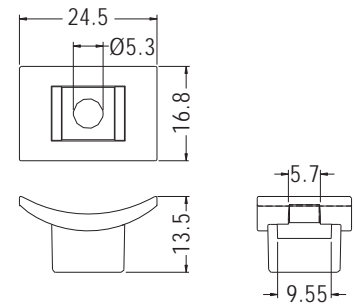
# CAPACITOR HOUSING



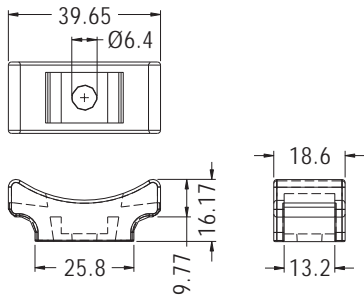
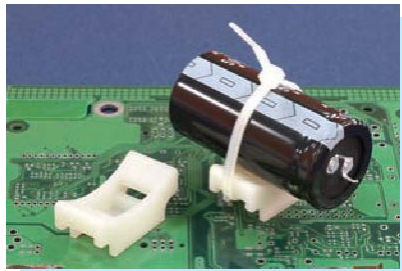
- ◆ MATERIAL: NYLON 66 (UL)
- ◆ FLAME CLASS: 94V-2/94V-0
- ◆ COLOR: NATURAL/BLACK
- ◆ UNIT: mm



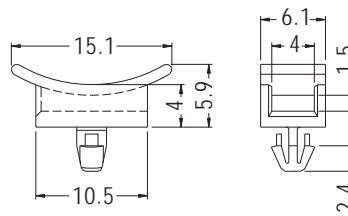
PART NO	PACKAGE
THMB-1	1000



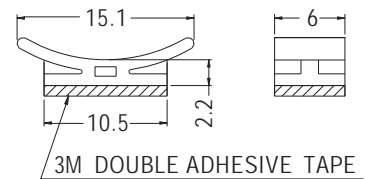
PART NO	PACKAGE
THMB-2	1000



PART NO	PACKAGE
★ THMB-3	1000

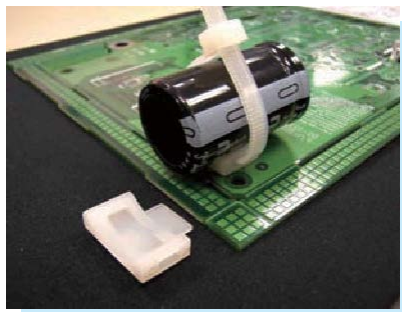


PART NO	PACKAGE
THMK-1	1000

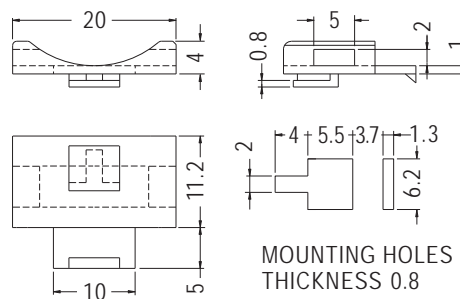


PART NO	PACKAGE
THMC-1	1000

# CAPACITOR HOUSING



- ◆ MATERIAL: NYLON 66 (UL)
- ◆ FLAME CLASS: 94V-2/94V-0
- ◆ COLOR: NATURAL/BLACK
- ◆ UNIT: mm



PART NO	PACKAGE
MTAC-1	500

