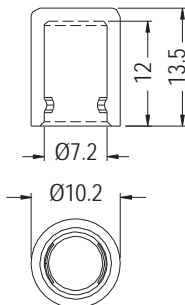


CONNECTOR COVER



- ◆ MATERIAL: NYLON 66 (UL)
- ◆ FLAME CLASS: 94V-2/94V-0
- ◆ COLOR: NATURAL/BLACK
- ◆ UNIT: mm

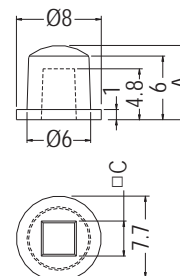
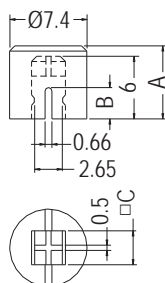


PART NO	PACKAGE
TSC-28	1000

TACT SWITCH CAP



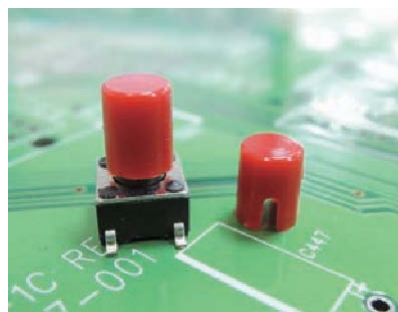
- ◆ MATERIAL: ABS (UL)
- ◆ FLAME CLASS: 94HB
- ◆ COLOR: BLACK
- ◆ UNIT: mm



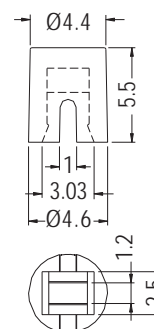
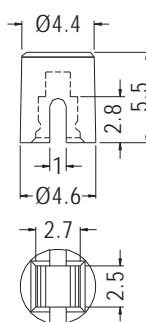
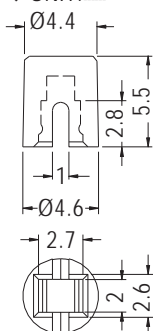
PART NO	A	B	C	PACKAGE
TSC-10	7.0	3.0	3.25	1000

PART NO	A	C	PACKAGE
TSC-11	7.0	3.3	1000

TACT SWITCH CAP



- ◆ MATERIAL: NYLON 66 (UL)
- ◆ FLAME CLASS: 94V-2/94V-0
- ◆ COLOR: NATURAL/BLACK/RED/GRAY
- ◆ UNIT: mm



PART NO	PACKAGE
TSC-19	1000

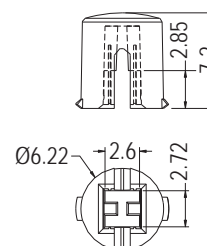
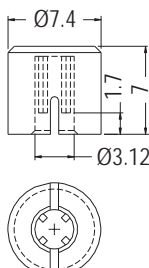
PART NO	PACKAGE
TSC-33	1000

PART NO	PACKAGE
TSC-32	1000

TACT SWITCH CAP



- ◆ MATERIAL: ABS (UL)
- ◆ FLAME CLASS: 94HB
- ◆ COLOR: BLACK
- ◆ UNIT: mm



PART NO	PACKAGE
TSC-40	1000

PART NO	PACKAGE
★ TSC-45	1000

