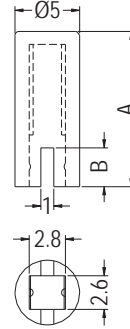


TACT SWITCH CAP



- ◆ MATERIAL: NYLON 66 (UL)
- ◆ FLAME CLASS: 94V-2/94V-0
- ◆ COLOR: NATURAL/BLACK
- ◆ UNIT: mm

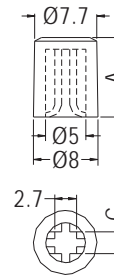
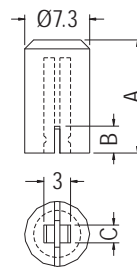


PART NO	A	B	PACKAGE
TSC-26	12.0	3.0	1000

TACT SWITCH CAP



- ◆ MATERIAL: ABS (UL)/NYLON 66 (UL)
- ◆ FLAME CLASS: 94HB/94V-2/94V-0
- ◆ COLOR: NATURAL/BLACK
- ◆ UNIT: mm



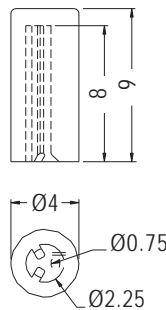
PART NO	A	B	C	PACKAGE
TSC-4	12.7	3.0	2.0	1000
TSC-5	12.7	4.2	3.0	
TSC-25	11.6	3.0	2.0	

PART NO	A	C	PACKAGE
TSC-6	9.9	2.7	1000

TEST PIN CAP



- ◆ MATERIAL: NYLON 66 (UL)
- ◆ FLAME CLASS: 94V-2/94V-0
- ◆ COLOR: NATURAL/BLACK
- ◆ UNIT: mm

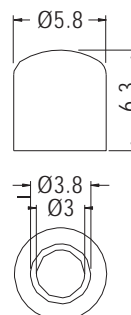


PART NO	PACKAGE
TSC-42	1000

SWITCH COVER



- ◆ MATERIAL: NYLON 66 (UL)
- ◆ FLAME CLASS: 94V-2/94V-0
- ◆ COLOR: NATURAL/BLACK
- ◆ UNIT: mm



PART NO	PACKAGE
PENCOMC-1	1000

