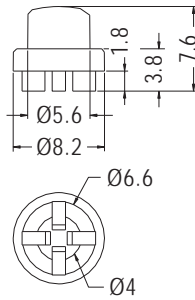


## SWITCH COVER



- ◆ MATERIAL: NYLON 66 (UL)
- ◆ FLAME CLASS: 94V-2/94V-0
- ◆ COLOR: NATURAL/BLACK
- ◆ UNIT: mm

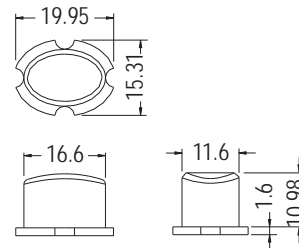


PART NO	PACKAGE
TSC-20	1000

## SWITCH COVER

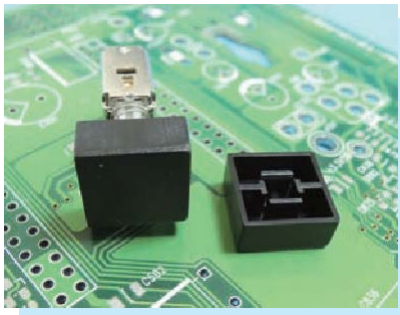


- ◆ MATERIAL: PC+ABS (UL)
- ◆ FLAME CLASS: 94V-0
- ◆ COLOR: GRAY/BLACK
- ◆ UNIT: mm

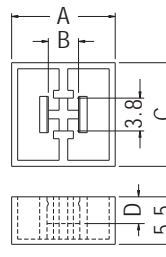


PART NO	PACKAGE
TSC-9	1000

## TACT SWITCH CAP

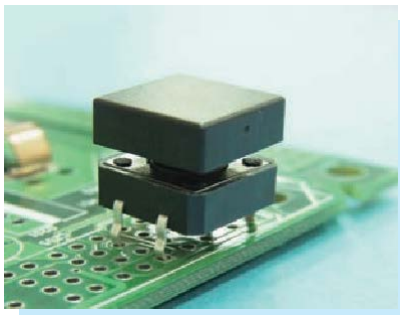


- ◆ MATERIAL: ABS (UL)
- ◆ FLAME CLASS: 94HB
- ◆ COLOR: BLACK
- ◆ UNIT: mm

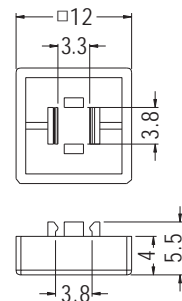


PART NO	A	B	C	D	PACKAGE
TSC-3	12.0	3.8	12.0	3.1	1000
TSC-18	9.0	3.8	9.0	2.8	

## TACT SWITCH CAP



- ◆ MATERIAL: ABS (UL)
- ◆ FLAME CLASS: 94HB
- ◆ COLOR: BLACK
- ◆ UNIT: mm



PART NO	PACKAGE
TSC-36	1000

