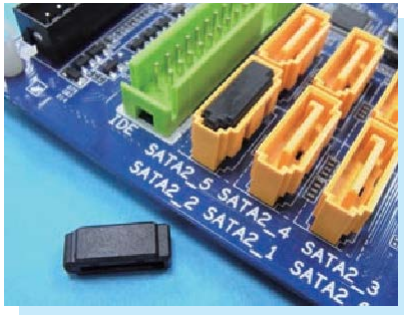
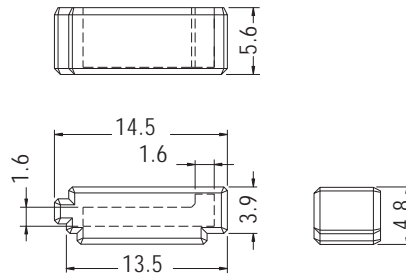


## SATA CONNECTOR COVER



MATERIAL:PE  
COLOR:BLACK  
UNIT:

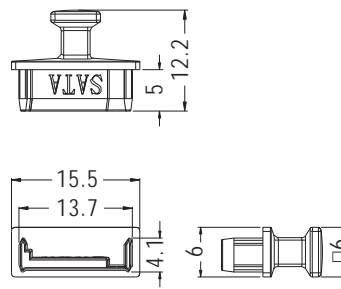


PART NO	PACKAGE
CSATA-1	1000

## SATA HOUSING



MATERIAL:PE  
COLOR:BLACK  
UNIT:

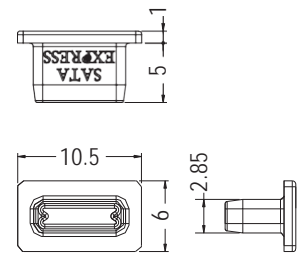
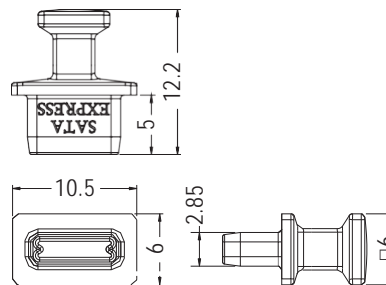


PART NO	PACKAGE
SATAC-1	1000

## SATA EXPRESS COVER



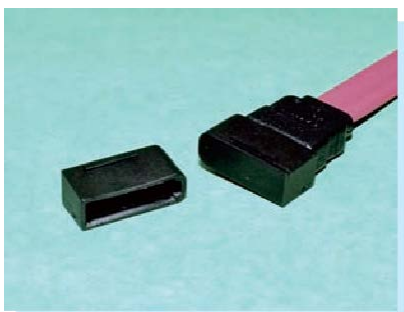
MATERIAL:PE  
COLOR:BLACK  
UNIT:



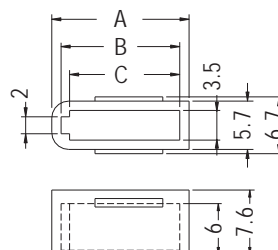
PART NO	PACKAGE
SATAC-2	1000

PART NO	PACKAGE
SATAC-3	1000

## SATA CONNECTOR COVER



MATERIAL:PE  
COLOR:BLACK  
UNIT:



PART NO	A	B	C	PACKAGE
SATAC-7	16.2	14.0	13.0	1000
SATAC-15	26.4	24.2	23.2	