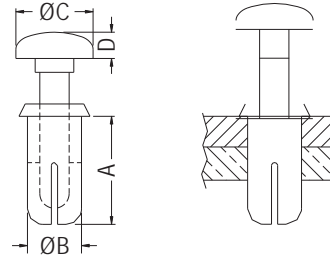


SNAP RIVET



- ◆ MATERIAL: NYLON 66 (UL)
- ◆ FLAME CLASS: 94V-2/94V-0
- ◆ COLOR: BLACK
- ◆ UNIT: mm



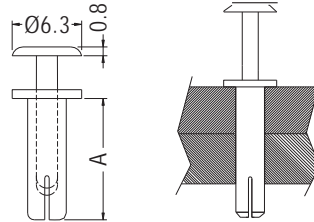
MOUNTING HOLE: ØF
THICKNESS: E

PART NO	A	B	C	D	E	F	PACKAGE
SRS3.5-4.5P	4.5	3.5	6.3	1.7	1.5~3.0	3.5	1000
SRS3.5-7P	7.0	3.5	5.0	1.7	4.5~5.5	3.5~3.6	

SNAP RIVET



- ◆ MATERIAL: NYLON 66 (UL)
- ◆ FLAME CLASS: 94V-2/94V-0
- ◆ COLOR: BLACK
- ◆ UNIT: mm



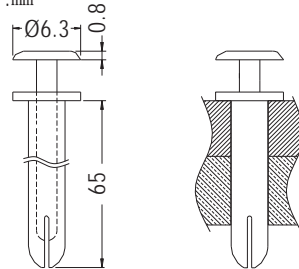
MOUNTING HOLE Ø3.5
THICKNESS: E

PART NO	A	E	PACKAGE
SRF3.5-11	11.0	8.0	1000
SRF3.5-37	37.0	34.0	

SNAP RIVET



- ◆ MATERIAL: NYLON 66 (UL)
- ◆ FLAME CLASS: 94V-2/94V-0
- ◆ COLOR: BLACK
- ◆ UNIT: mm



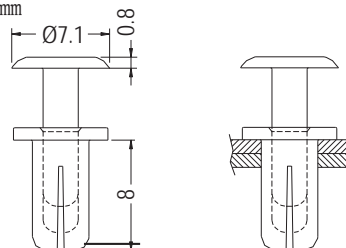
MOUNTING HOLE Ø3.5

PART NO	PACKAGE
SRF3.5-65	500

SNAP RIVET



- ◆ MATERIAL: NYLON 66 (UL)
- ◆ FLAME CLASS: 94V-2/94V-0
- ◆ COLOR: BLACK
- ◆ UNIT: mm



MOUNTING HOLE Ø4.0
THICKNESS 5.5~6.5

PART NO	PACKAGE
SRF4-8	1000

