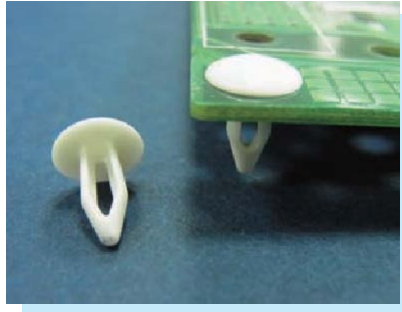
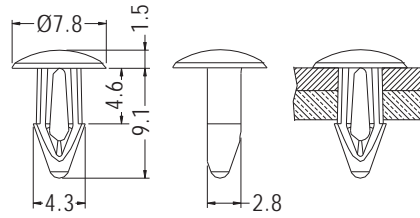


# MOUNTING BUTTON

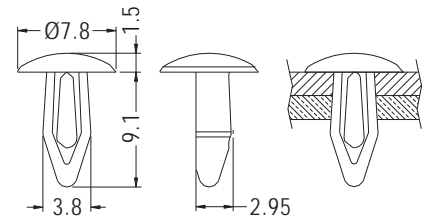


- ◆ MATERIAL: NYLON 66/PBT (UL)
- ◆ FLAME CLASS: 94V-2/94V-0
- ◆ COLOR: NATURAL/BLACK
- ◆ UNIT: mm



HOLE IN P.C.B Ø3.6

PART NO	PACKAGE
MB-34	2000



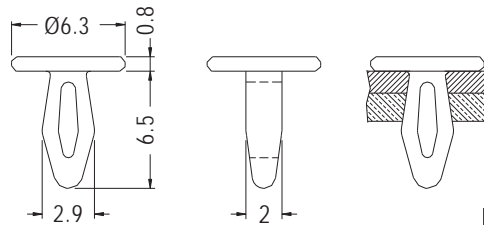
CHASSIS Ø3.5  
THICKNESS 3.5-4.3

PART NO	PACKAGE
MB-44	2000

# SNAP RIVET



- ◆ MATERIAL: NYLON 66 (UL)
- ◆ FLAME CLASS: 94V-2/94V-0
- ◆ COLOR: NATURAL/BLACK
- ◆ UNIT: mm



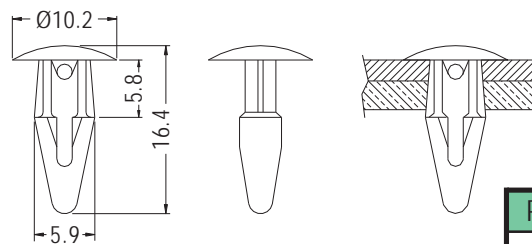
MOUNTING HOLE Ø2.5  
THICKNESS 2.0-2.5

PART NO	PACKAGE
MB-50	2000

# MOUNTING BUTTON



- ◆ MATERIAL: NYLON 66 (UL)/POM (UL)
- ◆ FLAME CLASS: 94HB/94V-2/94V-0
- ◆ COLOR: WHITE/BLACK/SILVER GRAY
- ◆ UNIT: mm



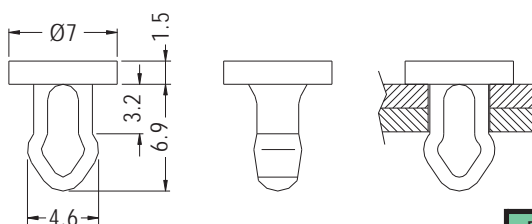
CHASSIS Ø5.0

PART NO	PACKAGE
MBT-1	1000

# MOUNTING BUTTON



- ◆ MATERIAL: NYLON 66 (UL)
- ◆ FLAME CLASS: 94V-2/94V-0
- ◆ COLOR: NATURAL/BLACK
- ◆ UNIT: mm



CHASSIS Ø4.0

PART NO	PACKAGE
MBT-2	2000

