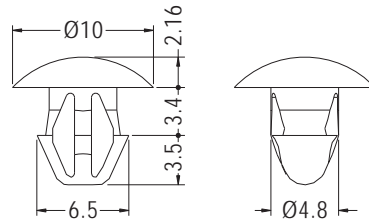


MOUNTING BUTTON



- ◆ MATERIAL: NYLON 66 (UL)
- ◆ FLAME CLASS: 94V-2/94V-0
- ◆ COLOR: NATURAL/BLACK/WHITE
- ◆ UNIT: mm



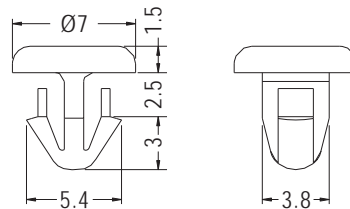
HOLE Ø5.0-Ø5.2
THICKNESS 3.2

PART NO	PACKAGE
HSRA-1	1000

SNAP RIVET



- ◆ MATERIAL: NYLON 66 (UL)
- ◆ FLAME CLASS: 94V-2/94V-0
- ◆ COLOR: NATURAL/BLACK
- ◆ UNIT: mm



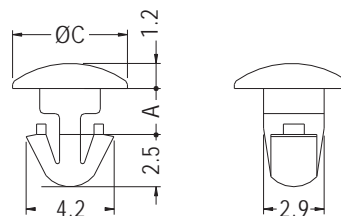
CHASSIS Ø4.0
THICKNESS 2.2

PART NO	PACKAGE
MB-32	1000

SNAP RIVET



- ◆ MATERIAL: NYLON 66 (UL)
- ◆ FLAME CLASS: 94V-2/94V-0
- ◆ COLOR: NATURAL/BLACK
- ◆ UNIT: mm



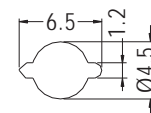
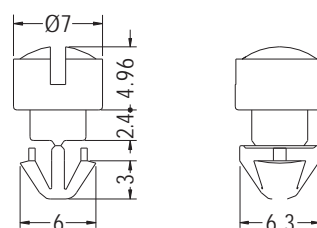
P.C.B Ø3.0
THICKNESS: B

PART NO	A	B	C	PACKAGE
MBL3-2	2.2	2.0	5.5	2000
MBL3-2.5	2.5	2.4	6.4	
MBL3-3	3.0	2.8	6.4	

SNAP RIVET



- ◆ MATERIAL: NYLON 66 (UL)
- ◆ FLAME CLASS: 94V-2/94V-0
- ◆ COLOR: NATURAL/BLACK
- ◆ UNIT: mm



MOUNTING HOLE
THICKNESS 3.5-3.8

PART NO	PACKAGE
LEFS-2	1000