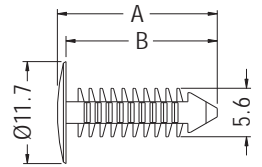


MOUNTING BUTTON



- ◆ MATERIAL: NYLON 66 (UL)
- ◆ FLAME CLASS: 94V-2/94V-0
- ◆ COLOR: NATURAL/BLACK
- ◆ UNIT: mm



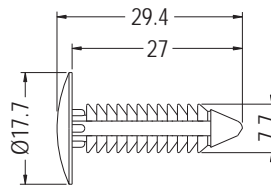
MOUNTING HOLE $\varnothing 4.8$
THICKNESS: E

PART NO	A	B	E	PACKAGE
MBW-17	18.5	17.5	2.54~15.2	1000
MBW-23	21.5	20.5	4.0~25.0	

MOUNTING BUTTON



- ◆ MATERIAL: NYLON 66 (UL)
- ◆ FLAME CLASS: 94V-2/94V-0
- ◆ COLOR: NATURAL/WHITE/BLACK
- ◆ UNIT: mm



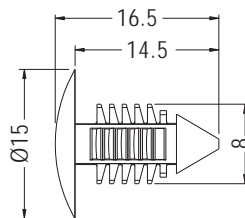
MOUNTING HOLE $\varnothing 6.4\text{--}7.0$

PART NO	PACKAGE
MBW-24	1000

SNAP RIVET



- ◆ MATERIAL: NYLON 66 (UL)
- ◆ FLAME CLASS: 94V-2/94V-0
- ◆ COLOR: NATURAL/BLACK
- ◆ UNIT: mm



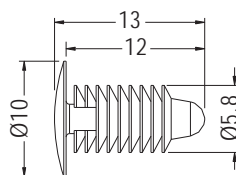
MOUNTING HOLE $\varnothing 7.0$
THICKNESS 3.2~6.0

PART NO	PACKAGE
MBW-27	1000

MOUNTING BUTTON



- ◆ MATERIAL: NYLON 66 (UL)
- ◆ FLAME CLASS: 94V-2/94V-0
- ◆ COLOR: NATURAL/BLACK
- ◆ UNIT: mm



MOUNTING HOLE $\varnothing 5.0\text{--}5.5$
THICKNESS 0.7~6.4

PART NO	PACKAGE
MBW5-12	1000