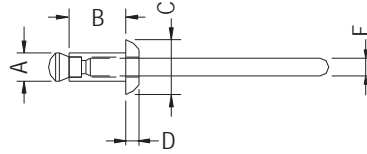


MOUNTING BUTTON

- ◆ MATERIAL: NYLON 66 (UL)/PC (UL)
- ◆ FLAME CLASS: 94V-2/94V-0
- ◆ COLOR: NATURAL/BLACK
- ◆ UNIT: mm

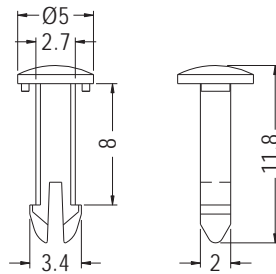


MOUNTING HOLE: ØF
THICKNESS: G
CUT OUT FORCE: H (kg)

PART NO	A	B	C	D	E	F	G	H	PACKAGE
CR32-1	3.2	6.4	6.4	1.4	2.1	Ø3.3	1.0~4.0	20.0	500
CR32-2		9.6					4.0~7.0		
CR32-3		12.7					7.0~10.0		
CR40-1	4.0	6.4	8.0	1.8	2.4	Ø4.1	1.0~4.0		
CR40-2		9.6					4.0~7.0		
CR40-3		12.7					7.0~10.0		
CR48-1	4.8	8.0	9.6	2.0	2.8	Ø4.9	1.5~5.0	40.0	
CR48-2		11.2					5.0~8.0		
CR48-3		14.4					8.0~11.0		
CR56-1	5.6	9.6	12.0	2.2	3.4	Ø5.7	2.0~5.5	65.0	
CR56-2		12.7					5.5~8.5		
CR56-3		15.9					8.5~12.0		

MOUNTING BUTTON

- ◆ MATERIAL: NYLON 66 (UL)
- ◆ FLAME CLASS: 94V-2/94V-0
- ◆ COLOR: NATURAL/BLACK
- ◆ UNIT: mm

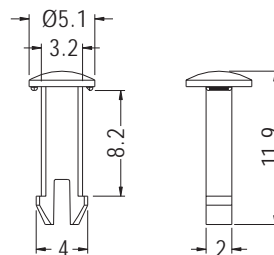


MOUNTING HOLE Ø3.0

PART NO	PACKAGE
PNL-8	1000

MOUNTING BUTTON

- ◆ MATERIAL: NYLON 66 (UL)
- ◆ FLAME CLASS: 94V-2/94V-0
- ◆ COLOR: NATURAL/BLACK
- ◆ UNIT: mm



MOUNTING HOLE Ø3.3
THICKNESS 7.7

PART NO	PACKAGE
PNL-1	1000

