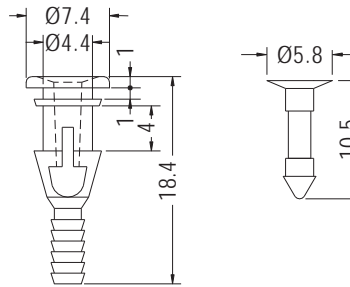


FAN SNAP RIVET



- ◆ BODY MATERIAL: TPE
- ◆ PIN MATERIAL: NYLON 66 (UL)
- ◆ FLAME CLASS: 94V-2
- ◆ COLOR: BLACK
- ◆ UNIT: mm



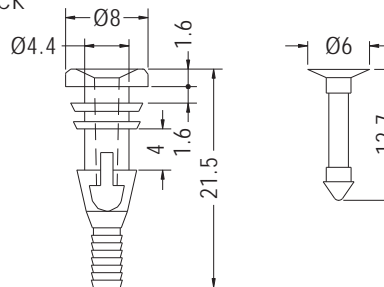
CHASSIS HOLE Ø4.8-Ø5.0

PART NO	PACKAGE
FSP-1	1000

FAN SNAP RIVET



- ◆ BODY MATERIAL: TPE
- ◆ PIN MATERIAL: NYLON 66 (UL)
- ◆ FLAME CLASS: 94V-2
- ◆ COLOR: BLACK
- ◆ UNIT: mm



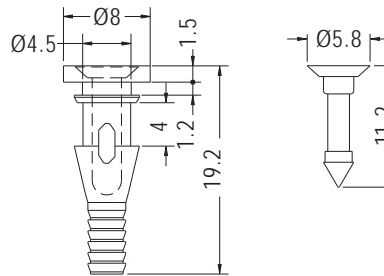
CHASSIS HOLE Ø4.8-Ø5.0

PART NO	PACKAGE
FSP-2	1000

FAN SNAP RIVET



- ◆ BODY MATERIAL: TPE
- ◆ PIN MATERIAL: NYLON 66 (UL)
- ◆ FLAME CLASS: 94V-2
- ◆ COLOR: BLACK
- ◆ UNIT: mm



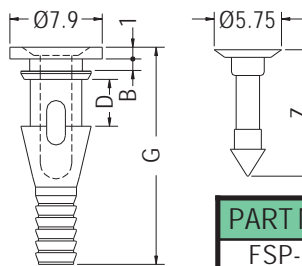
MOUNTING HOLE Ø4.5

PART NO	PACKAGE
FSP-3	1000

FAN SNAP RIVET



- ◆ BODY MATERIAL: TPE
- ◆ PIN MATERIAL: NYLON 66 (UL)
- ◆ FLAME CLASS: 94V-2
- ◆ COLOR: BLACK
- ◆ UNIT: mm



CHASSIS: ØH

PART NO	B	D	G	H	Z	PACKAGE
FSP-4	1.05	3.9	18.55	4.5~4.7	10.8	1000
FSP-5	0.9	3.9	14.3	4.5~4.7	10.8	
FSP-6	1.6	5.0	20.1	4.5	12.1	