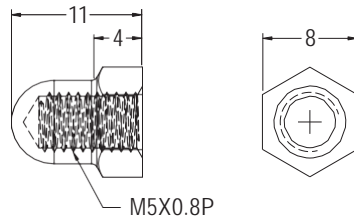


## SCREW BONNET

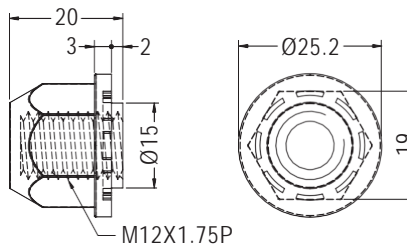
- ◆ MATERIAL: NYLON 66 (UL)
- ◆ FLAME CLASS: 94V-2/94V-0
- ◆ COLOR: NATURAL/BLACK
- ◆ UNIT: mm



PART NO	PACKAGE
MP5-1	1000

## SCREW BONNET

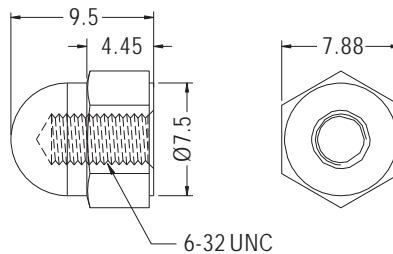
- ◆ MATERIAL: NYLON 66 (UL)
- ◆ FLAME CLASS: 94V-2/94V-0
- ◆ COLOR: NATURAL/BLACK
- ◆ UNIT: mm



PART NO	PACKAGE
MP-12	1000

## SCREW BONNET

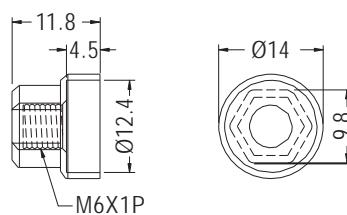
- ◆ MATERIAL: NYLON 66 (UL)
- ◆ FLAME CLASS: 94V-2/94V-0
- ◆ COLOR: NATURAL/BLACK
- ◆ UNIT: mm



PART NO	PACKAGE
MP-632	1000

## SCREW BONNET

- ◆ MATERIAL: PBT
- ◆ COLOR: BLACK
- ◆ UNIT: mm



PART NO	PACKAGE
MP6-1	1000