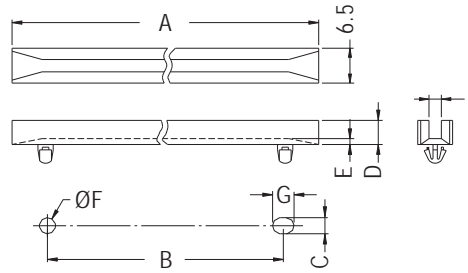


# CARD GUIDE



- ◆ MATERIAL: NYLON 66 (UL)
- ◆ FLAME CLASS: 94V-2/94V-0
- ◆ COLOR: NATURAL/BLACK
- ◆ UNIT: mm

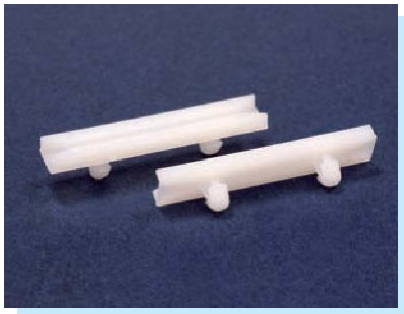


MOUNTING HOLES  
THICKNESS: T

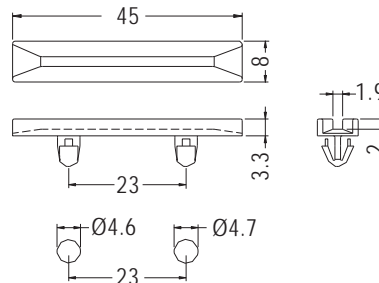
PART NO	A	B	C	D	E	F	G	I	T	PACKAGE
CGDLA-102	103.0	89.5	3.3	4.4	1.3	3.4	5.5	2.8	1.0	500
★CGDLA-102L									1.5	
CGDLA-350	89.2	76.7	3.0	4.5	1.1	3.0	4.0	2.3	0.8	250

# CARD GUIDE

**NEW**



- ◆ MATERIAL: NYLON 66 (UL)
- ◆ FLAME CLASS: 94V-2/94V-0
- ◆ COLOR: NATURAL/BLACK
- ◆ UNIT: mm

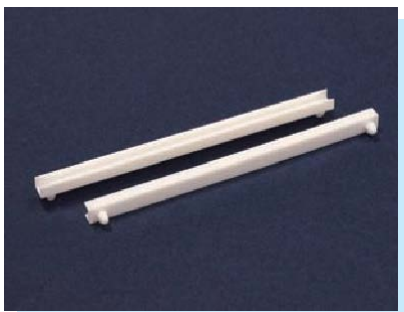


MOUNTING HOLES  
THICKNESS 1.6~1.8

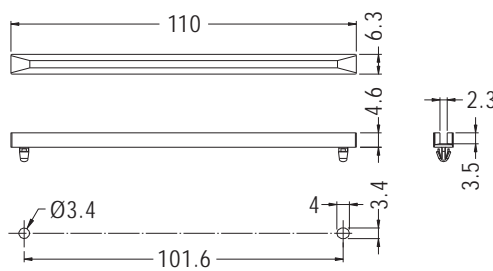
PART NO	PACKAGE
CG-45	1000

# CARD GUIDE

**NEW**



- ◆ MATERIAL: NYLON 66 (UL)
- ◆ FLAME CLASS: 94V-2/94V-0
- ◆ COLOR: NATURAL/BLACK
- ◆ UNIT: mm



MOUNTING HOLES  
THICKNESS 1.2

PART NO	PACKAGE
CGLJ-110	500

