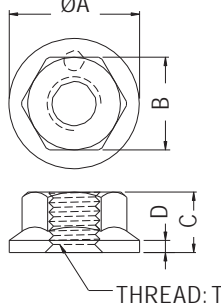


NUT



- ◆ MATERIAL: NYLON 66 (UL)
- ◆ FLAME CLASS: 94V-2/94V-0
- ◆ COLOR: NATURAL/BLACK
- ◆ UNIT: mm

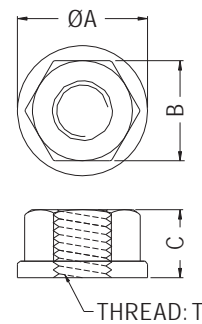


PART NO	A	B	C	D	T	PACKAGE
MO-3	8.5	5.4	3.2	0.8	M3X0.5P	1000
MO-4	9.7	6.9	4.5	0.9	M4X0.7P	
MO-632	10.6	7.8	4.2	1.0	6-32 UNC	

NUT



- ◆ MATERIAL: NYLON 66 (UL)
- ◆ FLAME CLASS: 94V-2/94V-0
- ◆ COLOR: NATURAL/BLACK/GRAY
- ◆ UNIT: mm

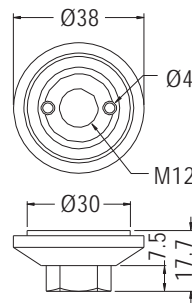


PART NO	A	B	C	T	PACKAGE
MO-6-68	13.0	10.0	6.8	M6X1P	2000
MO-8-85	17.0	13.0	8.5	M8X1.25P	1000

NUT



- ◆ MATERIAL: NYLON 66 (UL)
- ◆ FLAME CLASS: 94V-2/94V-0
- ◆ COLOR: NATURAL/WHITE/BLACK
- ◆ UNIT: mm

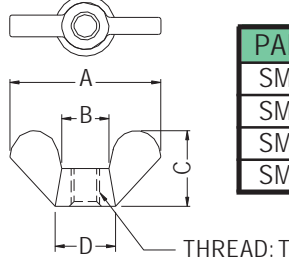


PART NO	PACKAGE
CAM-12	100

NUT



- ◆ MATERIAL: NYLON 66 (UL)
- ◆ FLAME CLASS: 94V-2/94V-0
- ◆ COLOR: NATURAL/BLACK
- ◆ UNIT: mm



PART NO	A	B	C	D	T	PACKAGE
SMO-3	15.96	5.0	8.0	6.4	M3X0.5P	1000
SMO-4	21.58	8.0	10.1	10.0	M4X0.7P	
SMO-632	22.0	8.0	10.5	10.0	6-32 UNC	
SMO-832	21.0	8.0	10.0	10.0	8-32 UNC	

