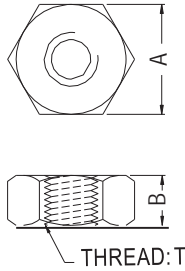


NUT

- ◆ MATERIAL: NYLON 66 (UL)/PC (UL)
- ◆ FLAME CLASS: 94V-2/94V-0
- ◆ COLOR: NATURAL
- ◆ UNIT: mm

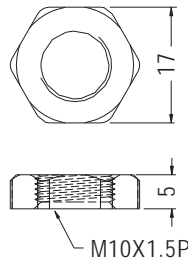


PART NO	A	B	T	PACKAGE
M-2	3.95	1.4	M2X0.4P	2000
M-2L	3.95	3.0	M2X0.4P	
M-2.6	5.0	2.0	M2.6X0.45P	
M-3	5.5	2.7	M3X0.5P	
M-3S	5.4	2.3	M3X0.5P	
M-3.5	5.9	2.8	M3.5X0.6P	1000
M-4	6.9	3.3	M4X0.7P	
M-4F	7.0	2.5	M4X0.7P	
M-5	8.0	4.4	M5X0.8P	
M-6	10.0	5.0	M6X1.0P	
S4-40	6.4	2.5	4-40UNC	
S6-32	7.9	3.2	6-32UNC	

NUT



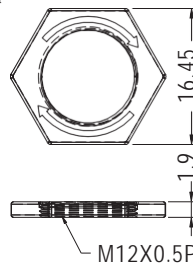
- ◆ MATERIAL: NYLON 66 (UL)
- ◆ FLAME CLASS: 94V-2/94V-0
- ◆ COLOR: NATURAL/BLACK
- ◆ UNIT: mm



PART NO	PACKAGE
M-10	500

NUT

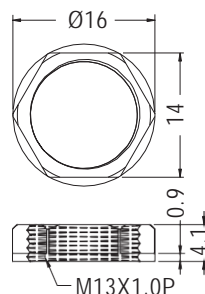
- ◆ MATERIAL: NYLON 66 (UL)
- ◆ FLAME CLASS: 94V-2/94V-0
- ◆ COLOR: NATURAL/BLACK
- ◆ UNIT: mm



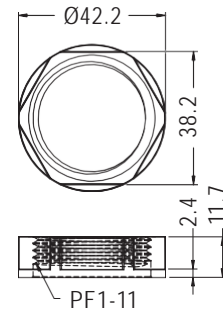
PART NO	PACKAGE
M12-2	2000

NUT

- ◆ MATERIAL: NYLON 66 (UL)
- ◆ FLAME CLASS: 94V-2/94V-0
- ◆ COLOR: NATURAL/BLACK
- ◆ UNIT: mm



PART NO	PACKAGE
MO-13	1000



PART NO	PACKAGE
MO-25.4	100

